



Parks and gardens in North Rhine-Westphalia - current challenges in urban development -

Evamaria Küppers-Ullrich , MBWSV NRW
Hybrid Parks Workshop 15.10.2012, Schloss Dyck
Bildmaterial z. T. aus div. Präsentationen des MBWSV entnommen

1



Global trends: new search for a „green“ quality of life



Evamaria Küppers-Ullrich , MBWSV NRW
Hybrid Parks Workshop 15.10.2012, Schloss Dyck

2



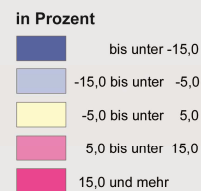
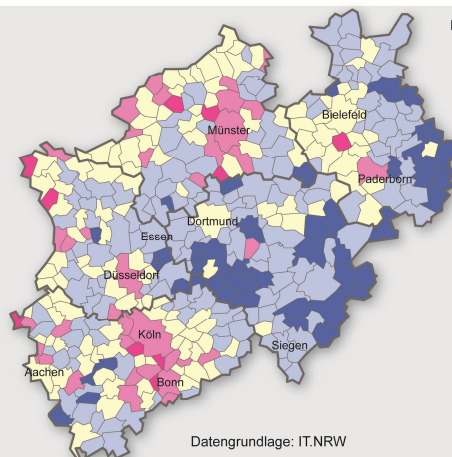
Current Challenges in Urban Development

- demographic change
- structural (economic) change
- climate change



Prognosis of population development 2008 - 2030

relative Bevölkerungsentwicklung 2008 - 2030



Datengrundlage: IT.NRW





Problems of the Ruhr region

- Declining economy, shrinking cities
- Environmental problems
- Deprived neighbourhoods with a high share of immigrants
- Bad image



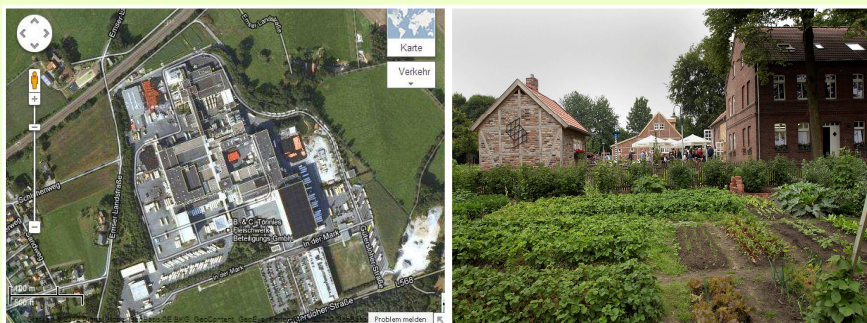
Evamaria Küppers-Ullrich, MBWSV NRW
Hybrid Parks Workshop 15.10.2012, Schloss Dyck



5



Other images between industry und „rural idyll“



Evamaria Küppers-Ullrich, MBWSV NRW
Hybrid Parks Workshop 15.10.2012, Schloss Dyck

6



New images of the Ruhr region: industrial-culture-landscape and cultural capital of europe 2010

- The industrial history leaves more than 3.500 examples for industrial heritage
- The IBA (international building exhibition Emscher Park, 1989-99) identified new perspectives for the future, ecological renewal with an economic perspective
- In the international view the industrial culture plays the main role:
 - UNESCO-Welterbe Zollverein
 - RuhrTriennale
 - Kulturhauptstadt 2010 u. a.



Evamaria Küppers-Ullrich, MBWSV NRW
Hybrid Parks Workshop 15.10.2012, Schloss Dyck

7



Reactions of Urban Policy

New procedures:

- integration of policies
- participation

New strategies:

- strengthening of city centres by funding of upgrading and redevelopment projects
- adaption to demographic change
- adaption to and mitigation of climate change

Evamaria Küppers-Ullrich, MBWSV NRW
Hybrid Parks Workshop 15.10.2012, Schloss Dyck

8



Integration of Policies by Local Action Plans

Integrated Local Action Plans

- define a comprehensive strategy for 5 to 10 years for a specific area and contain
 - an analysis of the situation,
 - priorities for the area,
 - measures to improve the situation and a
 - financial plan.
- are regarded as a promising way to integrate different policies
- are an obligatory basis for funding.

Evamaria Küppers-Ullrich, MBWSV NRW
Hybrid Parks Workshop 15.10.2012, Schloss Dyck

9



Basic strategy: Funding of upgrading of cities and redevelopment of brownfields



Evamaria Küppers-Ullrich, MBWSV NRW
Hybrid Parks Workshop 15.10.2012, Schloss Dyck

10



Funding of integrated urban development in NRW „Leipzig Charta“ - future tasks -

- Inside-development
- Climatic and energy questions
- Knowledge-based economy of the cities
- City and integration



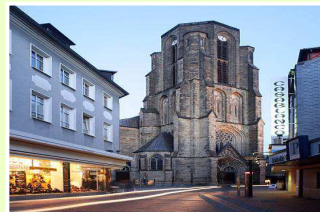
Evamaria Küppers-Ullrich, MBWSV NRW
Hybrid Parks Workshop 15.10.2012, Schloss Dyck

11



Funding of city development in NRW 2012

- 181 Mio. € for 177 measures
in 141 towns and cities
- 88 Mio. € for 117 measures in the
city - centres and historical centres
- 93 Mio. € for 60 projects of
„Stadtumbau“ and „social city“
- including 45 Mio. € for
36 „REGIONALE“ - Projects



Evamaria Küppers-Ullrich, MBWSV NRW
Hybrid Parks Workshop 15.10.2012, Schloss Dyck

12



Brownfield Redevelopment – Example Lake Phoenix (Dortmund)

Transformation of a steel factory to a high quality site



Evamaria Küppers-Ullrich, MBWSV NRW
Hybrid Parks Workshop 15.10.2012, Schloss Dyck



Brownfield Redevelopment – Example Dortmund Phoenix-West

Transformation of an industrial site (former steel factory)



Evamaria Küppers-Ullrich, MBWSV NRW
Hybrid Parks Workshop 15.10.2012, Schloss Dyck



Conservation of historic city centres (Detmold)



Evamaria Küppers-Ullrich, MBWSV NRW
Hybrid Parks Workshop 15.10.2012, Schloss Dyck

15



Old market place (Solingen)



Evamaria Küppers-Ullrich, MBWSV NRW
Hybrid Parks Workshop 15.10.2012, Schloss Dyck

16



Global trends: new search for a „green“ quality of life



Evamaria Küppers-Ullrich, MBWSV NRW
Hybrid Parks Workshop 15.10.2012, Schloss Dyck

17



Adaption to and mitigation of climate change

Adaption to climate change

- Provision for more frequent highwater
- Provision for more hot days

Mitigation of climate change

- Promotion of energy efficient building
- Energy efficient mobility (public transport, bicycles) and therefore
- Switching from suburbanisation to reurbanisation by
 - restrictions for new building areas outside the cities
 - making cities more attractive

Evamaria Küppers-Ullrich, MBWSV NRW
Hybrid Parks Workshop 15.10.2012, Schloss Dyck

18

Scenario liveable city

Ways of developing our cities and regions into liveable places and spaces in which intelligent answers must be found to pressing questions of social policy, transport, climate change and aesthetics.

- In this way, the EGHN has provided up-to-date information that underlines the potential of gardens for innovative and sustainable regional development: not just contributing to a regions's soft infrastructure but, as a part of the cultural landscape, as an economic generator. Specially in the Ruhrgebiet, the development and reconstruction of parks and gardens is one way of rehabilitation and revitalisation of post-industrial areas on their way on a structural transformation.
- The cultural and touristic promotion of the regions raises the quality of life in our cities and makes a substantial contribution to increased family friendliness.

Ministerium für Bauen, Wohnen,
Stadtentwicklung und Verkehr
des Landes Nordrhein-Westfalen



Evamaria Küppers-Ullrich, MBWSV NRW
Hybrid Parks Workshop 15.10.2012, Schloss Dyck

19

Example garden exhibitions

Ministerium für Bauen, Wohnen,
Stadtentwicklung und Verkehr
des Landes Nordrhein-Westfalen



Rietberg 2008

Funding: 4,43 Mio. Euro

Programme: - Historic Center

Evamaria Küppers-Ullrich, MBWSV NRW
Hybrid Parks Workshop 15.10.2012, Schloss Dyck

20



Example garden exhibitions



Hemer 2010

Funding: 10,05 Mio. Euro

Programme: „Stadtumbau West“

Evamaria Küppers-Ullrich, MBWSV NRW
Hybrid Parks Workshop 15.10.2012, Schloss Dyck

21



Example garden exhibitions



Zülpich 2014

Funding: 5,14 Mio. Euro

Programme „Städtebaulicher Denkmalschutz“

Evamaria Küppers-Ullrich, MBWSV NRW
Hybrid Parks Workshop 15.10.2012, Schloss Dyck

22



Example garden exhibitions



Evamaria Küppers-Ullrich, MBWSV NRW
Hybrid Parks Workshop 15.10.2012, Schloss Dyck

23



Evamaria Küppers-Ullrich, MBWSV NRW
Hybrid Parks Workshop 15.10.2012, Schloss Dyck
Bildmaterial z. T. aus div. Präsentationen des MBWSV entnommen

24