

Post Scheduling

- The main tool available is the Conservation Order;
- Requires owner to intervene on scheduled property in case of damage or disrepair in order to ensure that “no further deterioration occurs”;
- The only local hybrid park on which a CO was issued is Buskett in 2000 (scheduled in 1996).

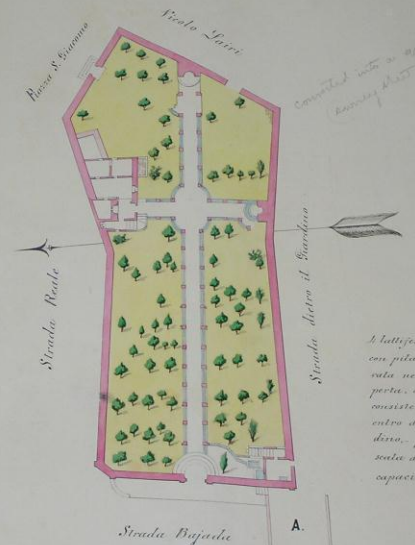


Scheduled parks/gardens

- Buskett gardens (1996);
- Howard gardens (2001);
- Private gardens around Malta (2006 - 2012):
 - Palazzo Parisio, Palazzo Stagno, Il-Kunvent, Roseville, Villa Francia, Upper & lower barracca gardens, Villa Bologna, Villa Frere, Addolorata Cemetery, Villa Gourgion, Palazzo Manuel (Casa Leoni), Villa d'Agatha (Bonnici), San Anton Gardens, St. Philip's Gardens, Mall Gardens, Inquisitor's Palace, Villa Bonici, Villa Madama, Bighi Hospital and Villa Sciberras, Villa Mekrech, Palazzo Spinola gardens.
- "Tal-Kmand" Gardens (2009/10):
 - Attard, Birkirkara, Għargħur, Gudja, Lija, Mosta, Qrendi, Safi, Siġġiewi, (Żabbar), Żebbuġ, Żejtun.

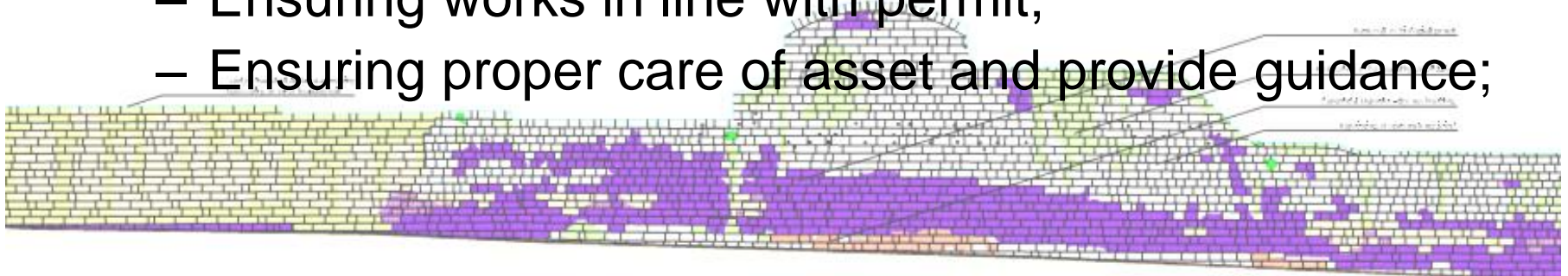
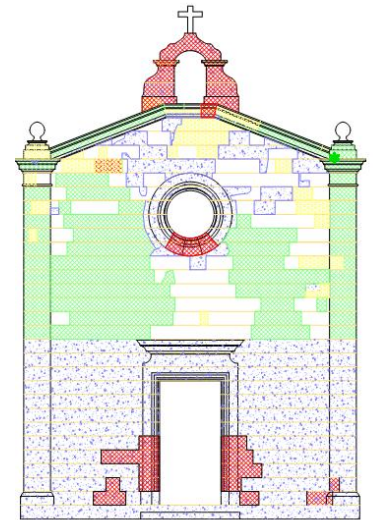


PIANTA
Del
Giardino
Sito in C^a Zabbar, Strada Bajada



Conservation vs Spatial Planning

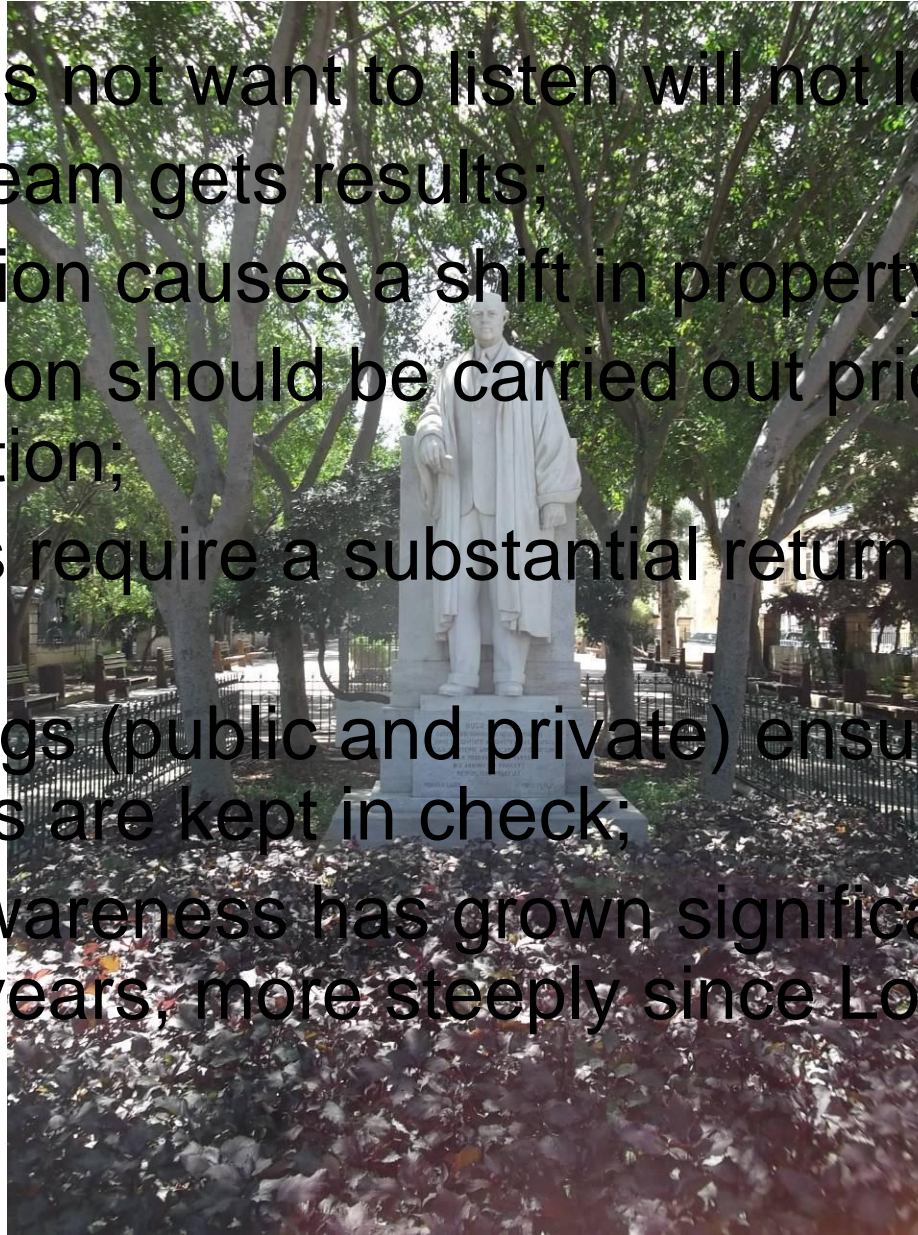
- Following the scheduling / planning process, applications are submitted;
- Assessment in line with legislation, scheduling, policies;
- Information requested: -
 - Method statements, Mapping (proposals, deterioration, proposed interventions), photomontages;
- Monitoring of works
 - Ensuring quality of work and workmanship;
 - Ensuring works in line with permit;
 - Ensuring proper care of asset and provide guidance;





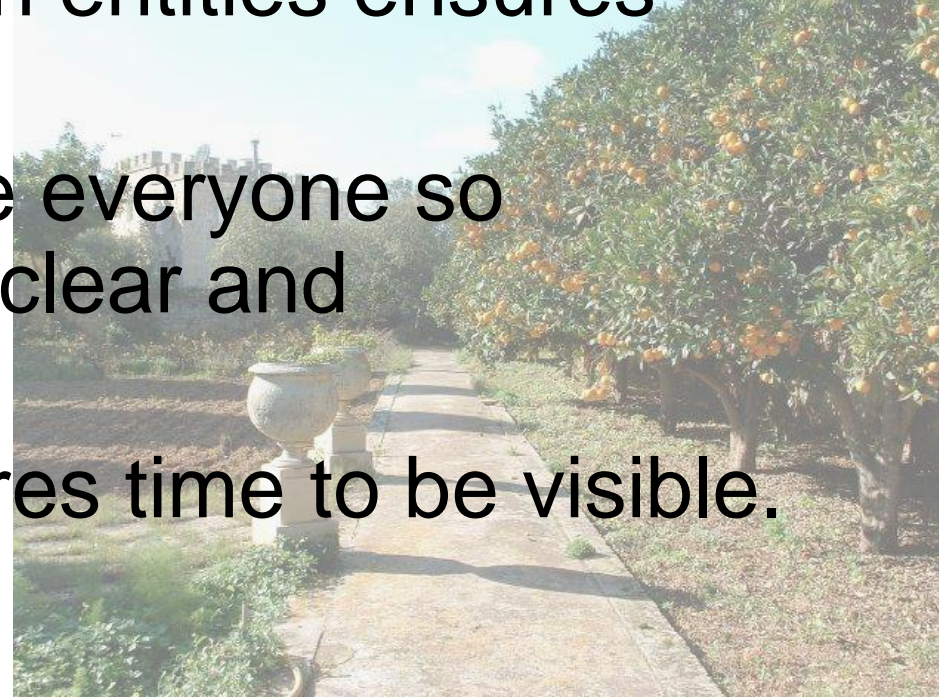
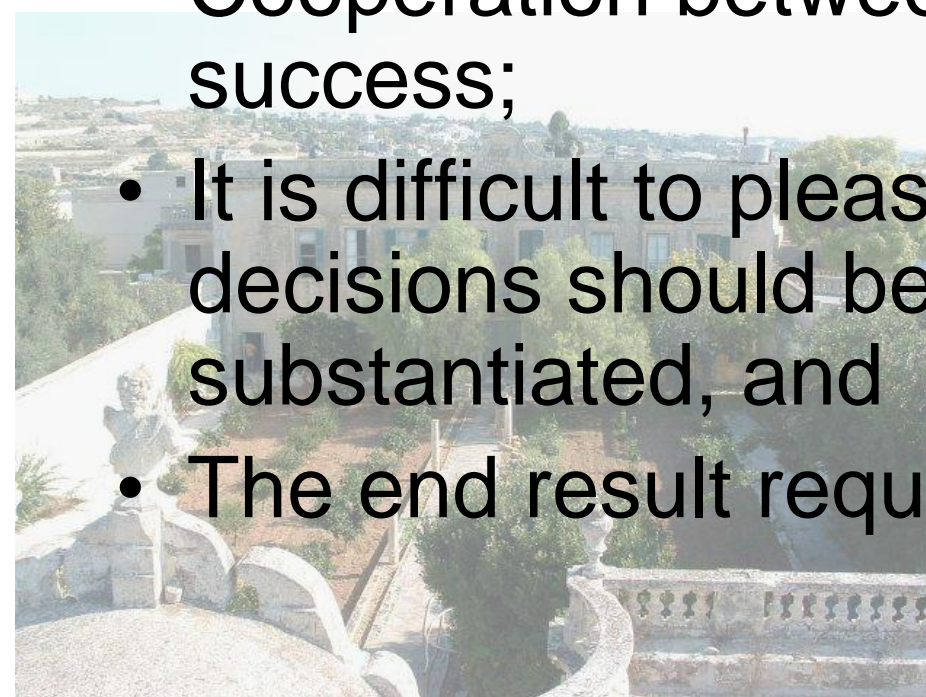
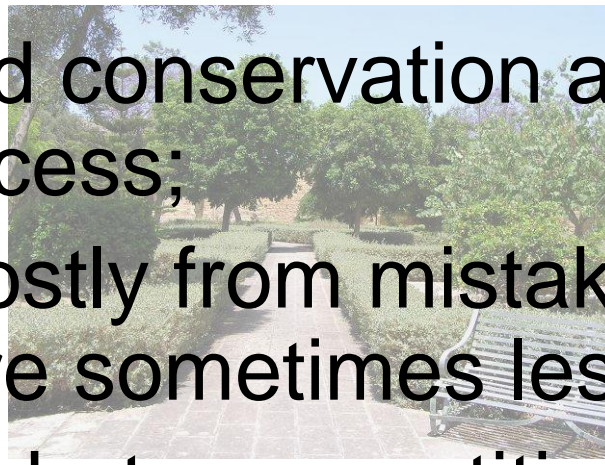
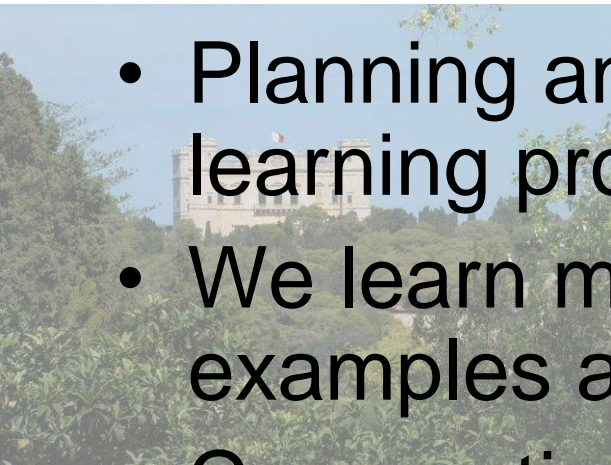
Lessons Learnt

- Who does not want to listen will not learn;
- A good team gets results;
- Intervention causes a shift in property prices;
- Restoration should be carried out prior to start of construction;
- Investors require a substantial return for them to invest;
- Watchdogs (public and private) ensure that illegalities are kept in check;
- Public awareness has grown significantly in the past 15 years, more steeply since Local Plans.



Conclusion

- Planning and conservation are at times a learning process;
- We learn mostly from mistakes: good examples are sometimes less visible;
- Cooperation between entities ensures success;
- It is difficult to please everyone so decisions should be clear and substantiated, and
- The end result requires time to be visible.



HYBRID PARKS

