

HYBRID PARKS



Home of England's Finest Gardens



HYBRID PARKS

John Handley OBE

Emeritus Professor

School of Environment and Development
Manchester University

Parks and Green Infrastructure:

Reflections on their changing role and functions

Professor John Handley, University of Manchester

Dr Susannah Gill, The Mersey Forest



Overview

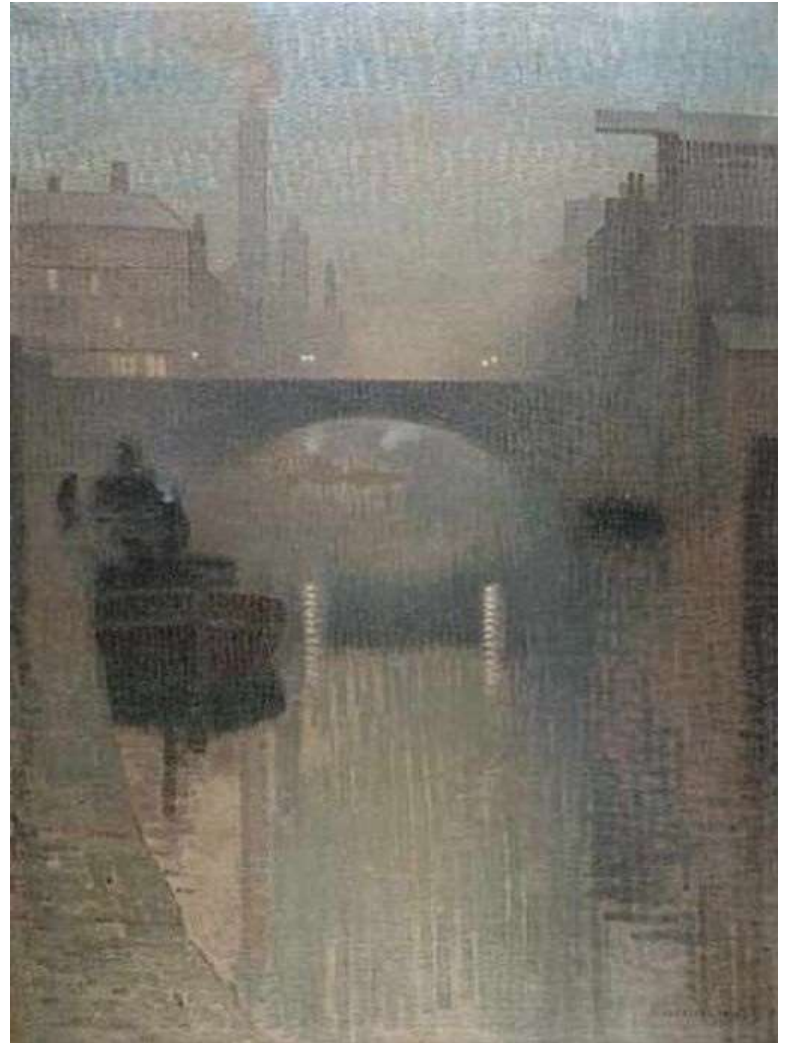
- Origin of parks & their state in late 20th century
- Management of post-industrial landscapes
- More recent concepts such as green infrastructure
- Health & climate change – challenges for the 21st century

Engels on Manchester

“The town is peculiarly built, so that a person may live in it for years... without coming into contact with a working-people’s quarter”

Friedrich Engels (1845) *The Condition of The Working Class in England*

- Parliamentary Select Committee for Public Works (1833)
- Parliamentary Select Committee for Public Health (1848)



Adolphe Valette (1912) *Bailey Bridge, Manchester*

Paxton's first public parks – a setting for real estate development

Princes Park, Liverpool

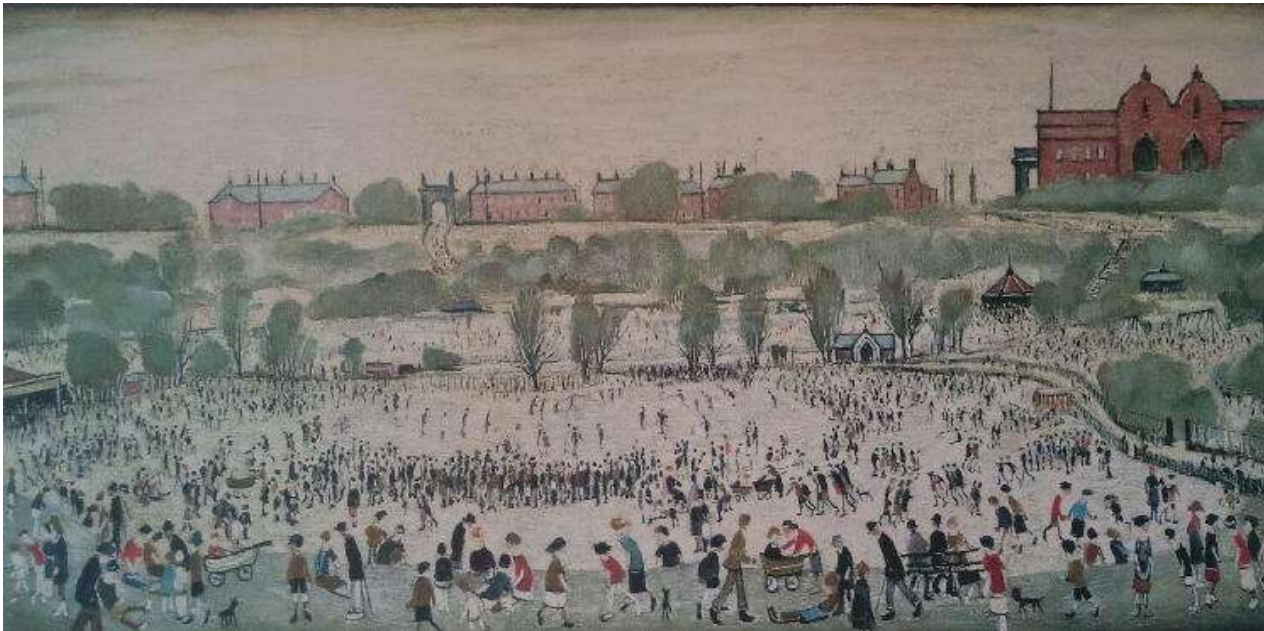


Birkenhead Park, Birkenhead



The campaign for public parks

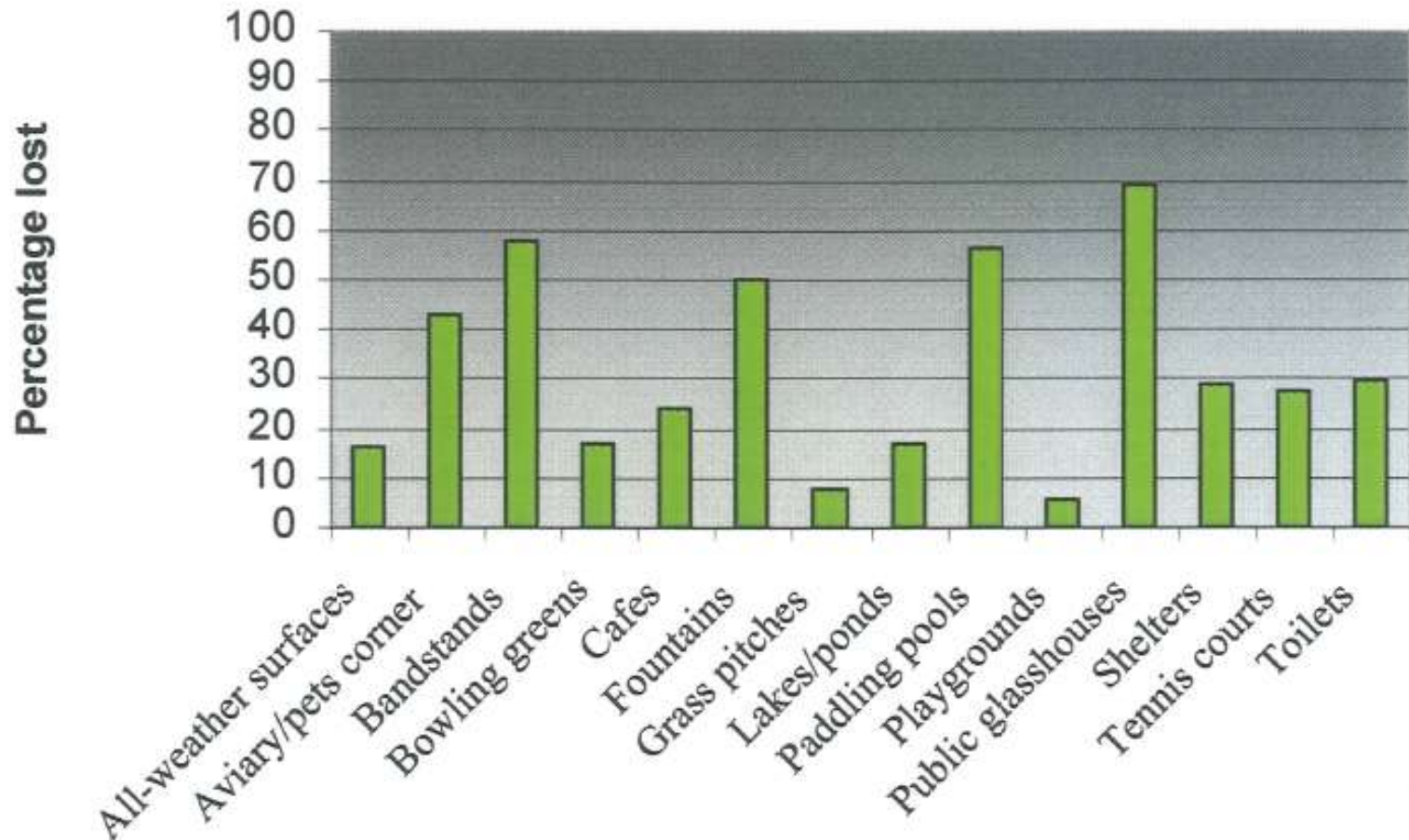
“The parks have been well named the ‘lungs of London’ they have saved thousands of lives, and sweetened the lot of and poetised the existence of all dwellers in Cockaigne. Dusty, smoky, toiling Manchester has no lungs!” – The Manchester Times, 29th July 1844



L.S. Lowry (1944)
Peel Park, Salford

Public parks: loss of assets in the modern era

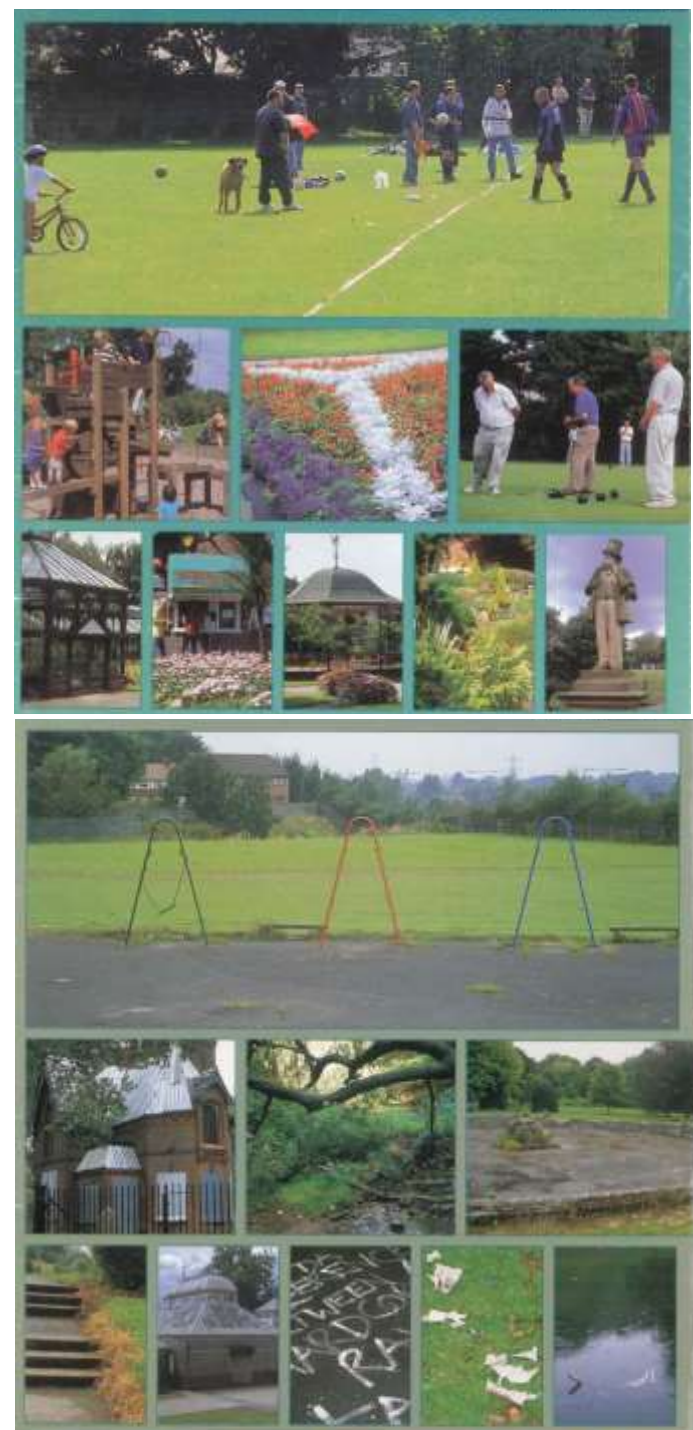
Loss of features in urban parks 1980-2000



The state of public parks in the late 20th century

“We are shocked at the weight of evidence, far beyond our expectations, about the extent of the problems parks have faced in the last 30 years... Un-used, derelict havens for crime and vandalism, it would be better to close them and re-use the land than to leave them to decay further.”

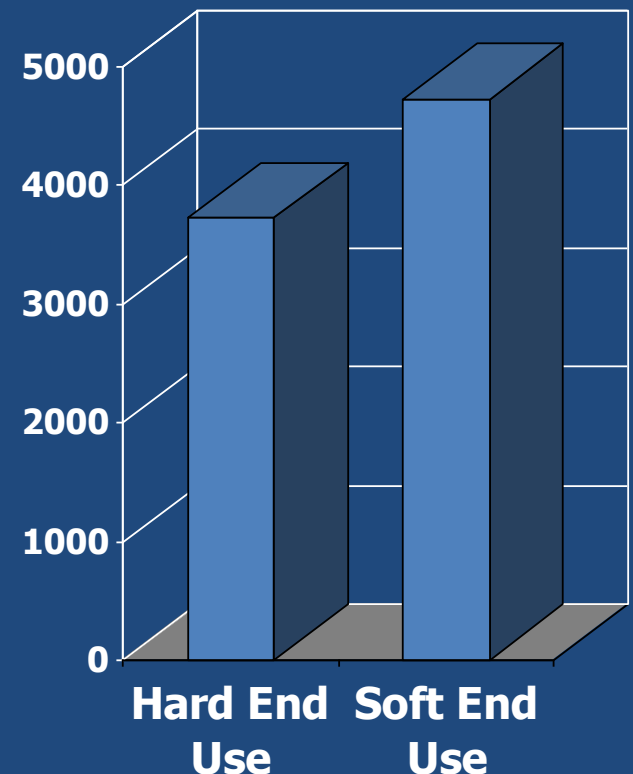
Parliamentary Environment, Transport and Regional Affairs Committee (1999)



The further challenge of managing restored post-industrial landscapes



Derelict land reclaimed in England and in use 1988-1993: DoE, 1995

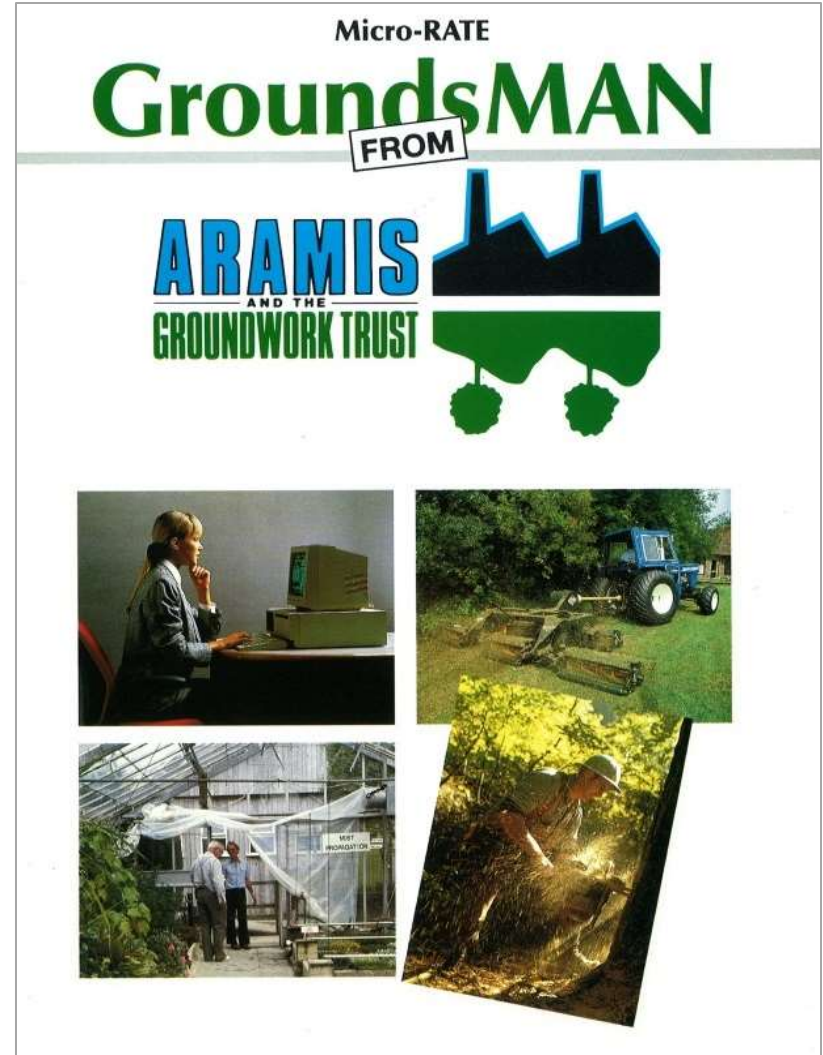


Making the most of greenspace

Maximise landscape benefits whilst minimising costs through:

- Encouraging a natural approach
- Promoting community involvement
- Introducing new sources of income
- Improving landscape efficiency

Source: Handley and Bulmer, 1987



Positive landscape management: the Northwich saltlands



Celebrating the industrial tradition: the Emscher Park, Ruhrgebiet

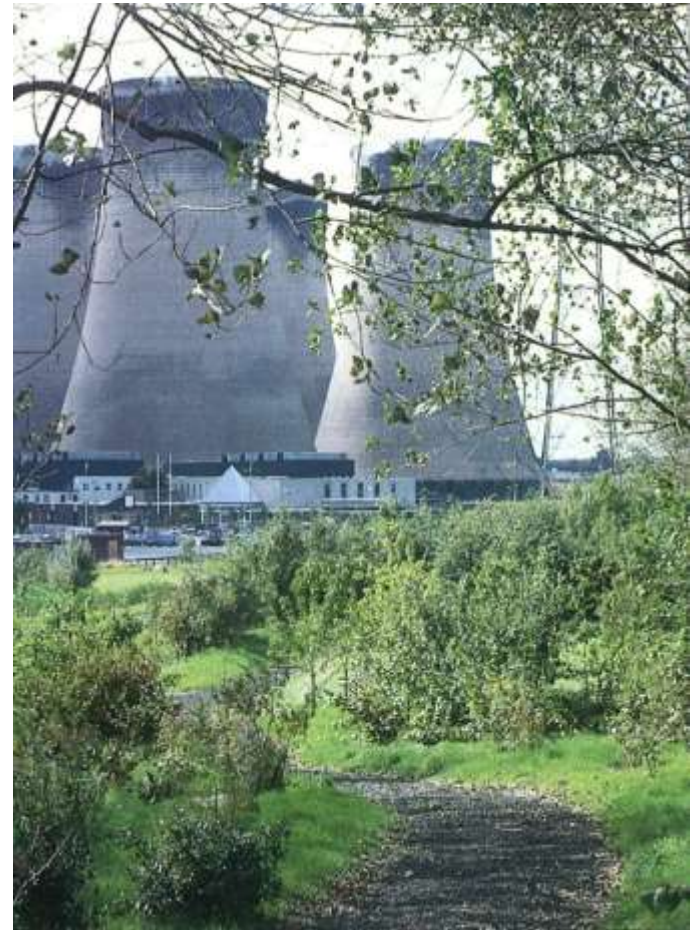


Source: Werner Hannappel. Lichtzeichen und Landmarken im Ruhrgebiet

Making the most of greenspace

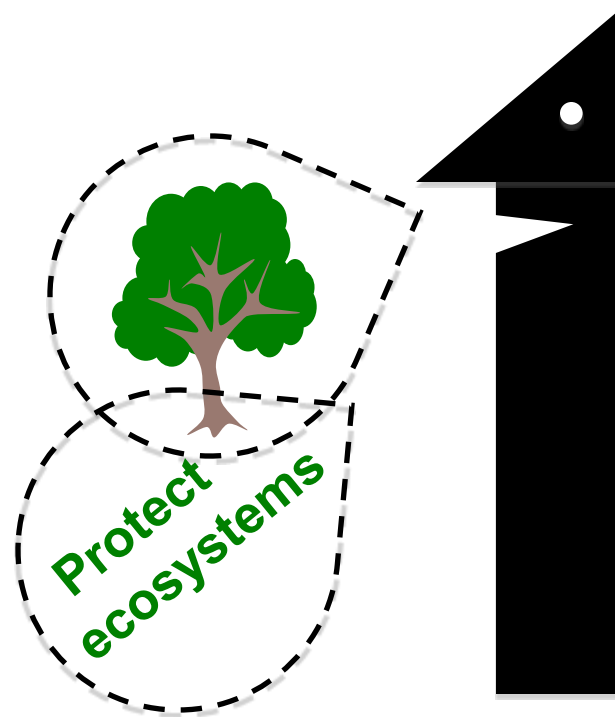
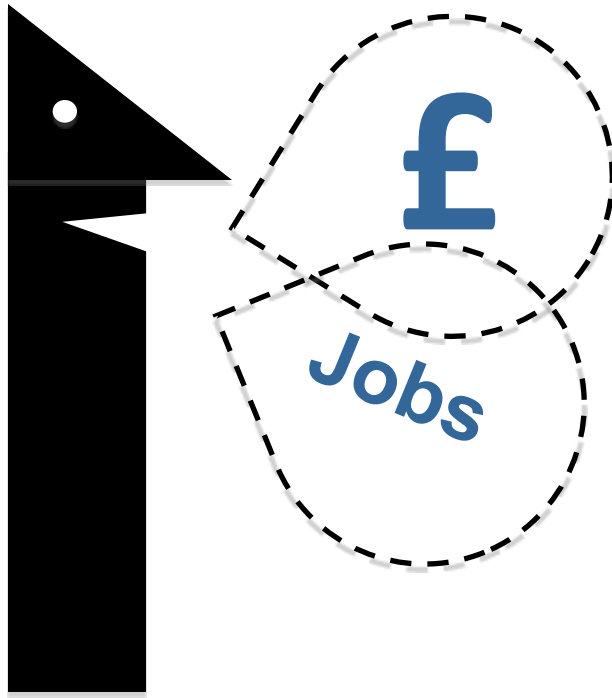
Making the most of greenspace resonates with modern concepts such as:

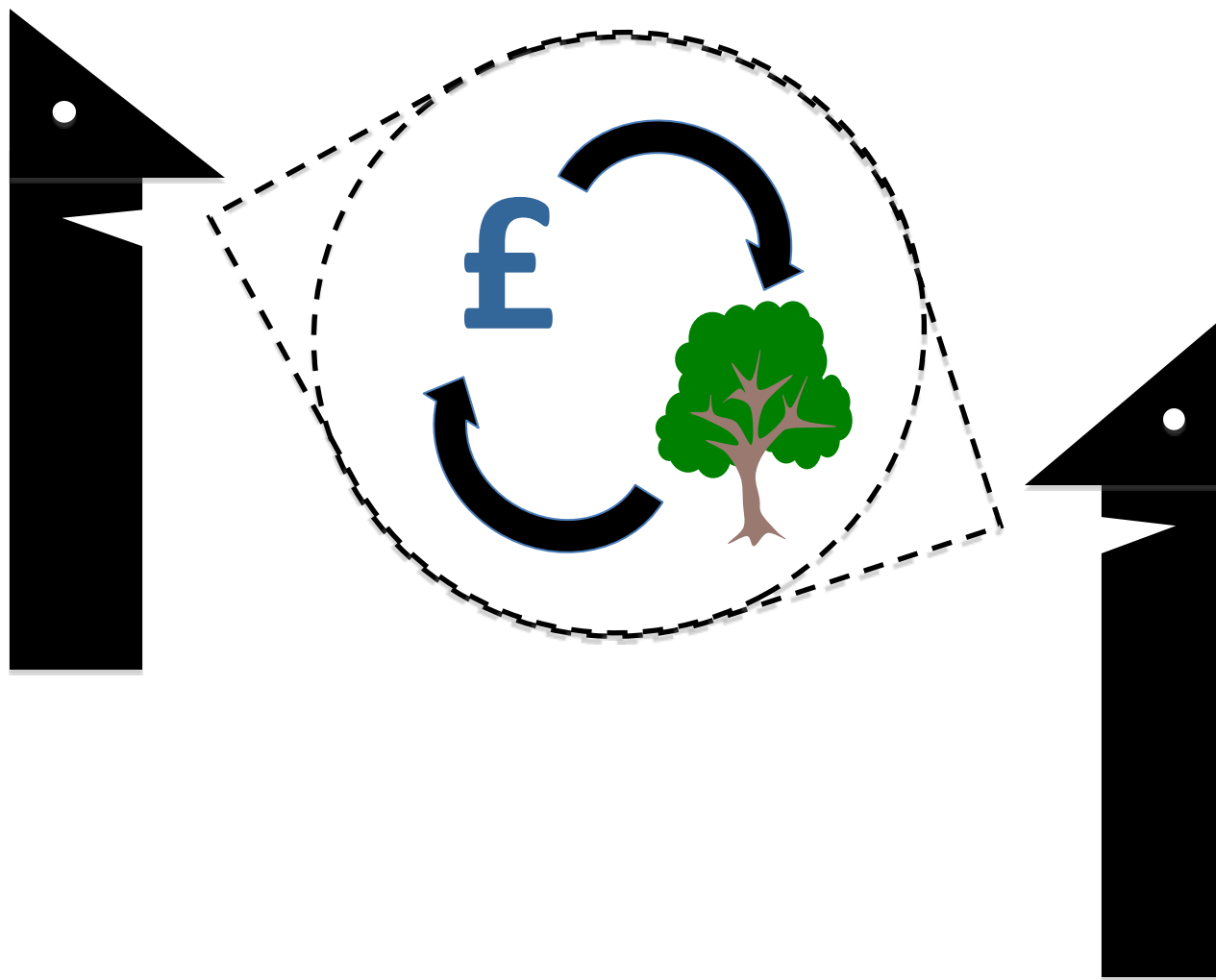
- Landscape Benefit
- Multi-functionality
- Green Infrastructure
- Ecosystem Services



Fiddler's Ferry Power Station

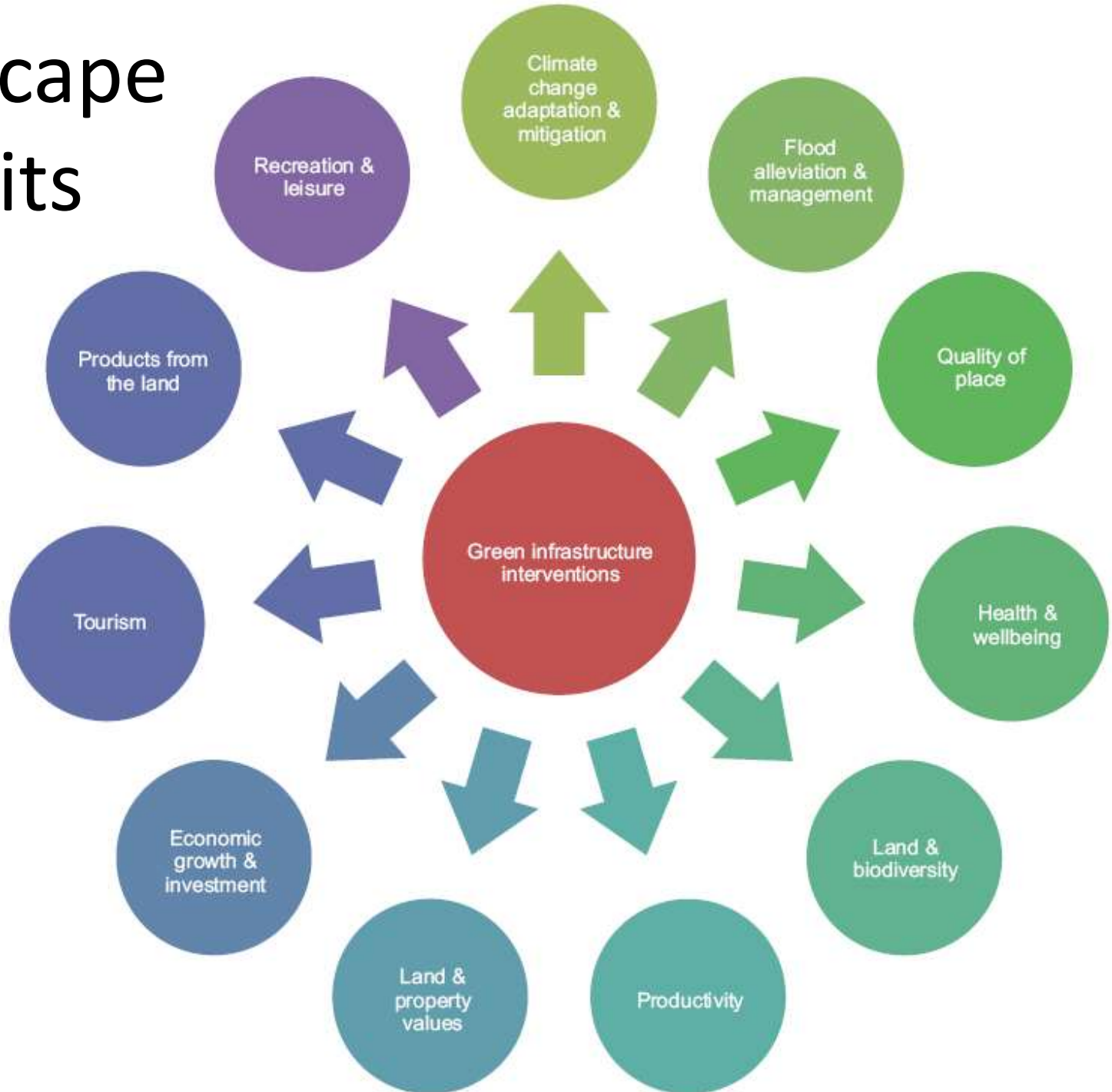
Speak the right language for your audience





Source: Anne Jaluzot, CABI

Landscape Benefits



**SUSTAINABLE
BIODIVERSE
HEALTHY
PROSPEROUS
COOL**



LIVERPOOL
GREEN INFRASTRUCTURE STRATEGY

RTPI commendation



Natural Choices for Health and Wellbeing
Guidance Notes



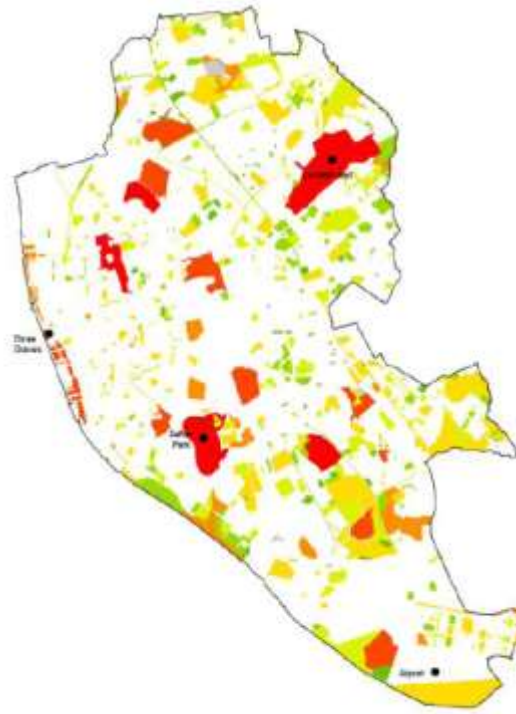
Decade of
Health &
Wellbeing

Green infrastructure types



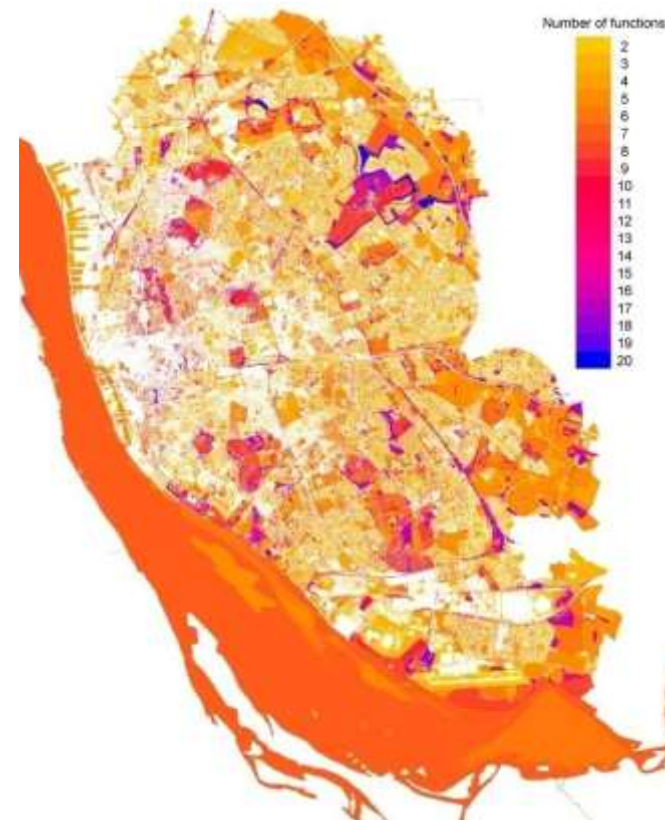
Everything with a colour is green or blue infrastructure...

Public open space



...Publicly owned open spaces account for some of this, but not the majority...

Multi-functionality



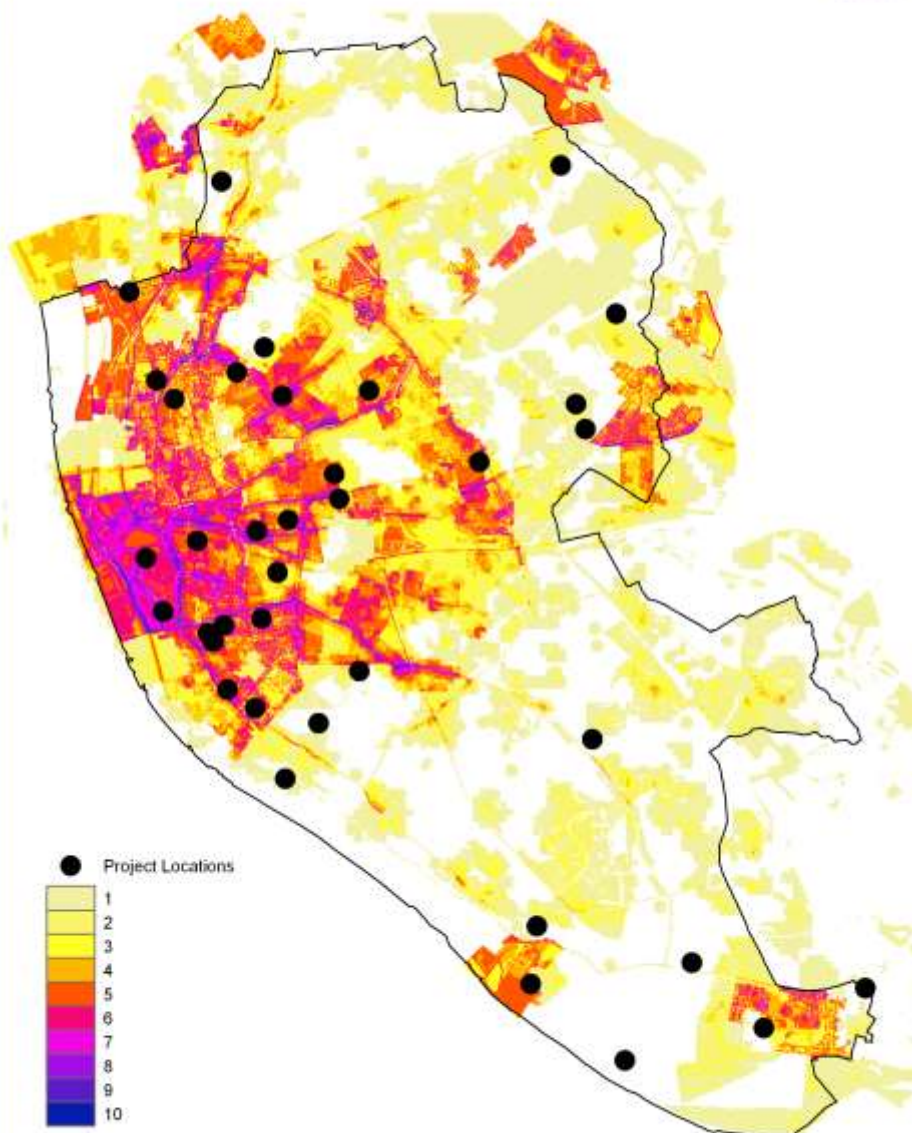
...But they are often multi-functional and have potential to be managed as such

The Natural Choices programme has enabled community greening in priority areas of health need



A City Providing Natural Choices for Health

Number of needs unfulfilled



GREEN INFRASTRUCTURE

VS

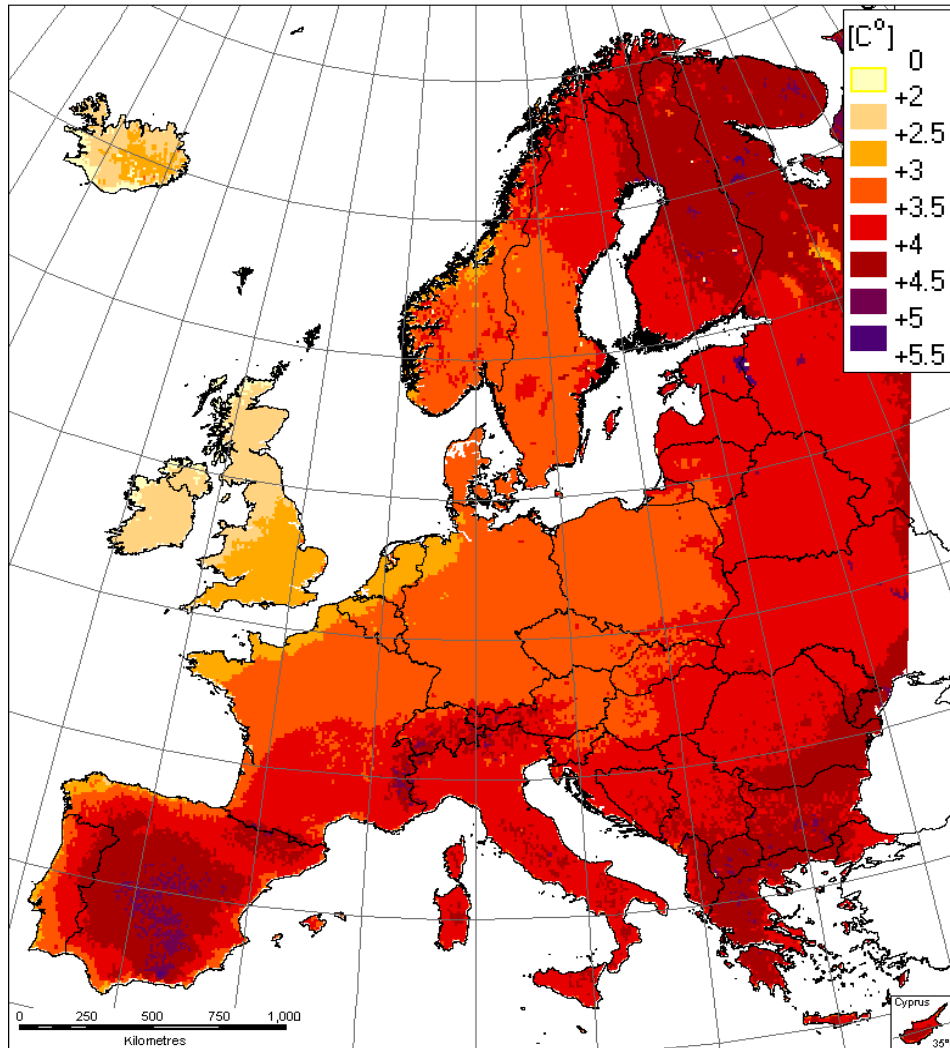
CLIMATE CHANGE



- Limited but important opportunities for mitigation
- Win-win adaptation option
- Planned strategically, often delivered locally
- Engagement of local communities crucial

Temperature change across Europe

Temperature: change in mean annual temperature [C°]

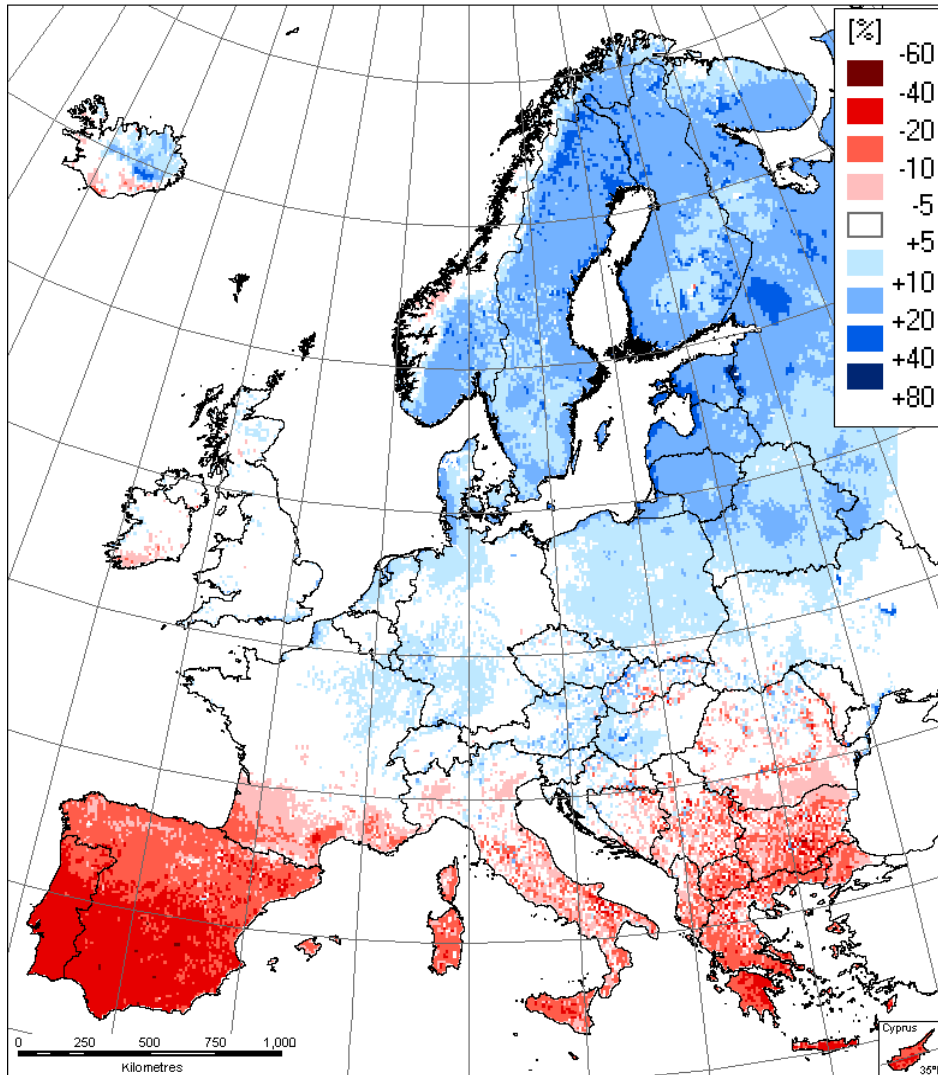


Change in mean annual temperature by the end of this century, based on IPCC SRES Scenario A2

Source: EC Green Paper (2007)

Precipitation change across Europe

Precipitation: change in annual amount [%]



Change in mean annual precipitation by the end of this century, based on IPCC SRES Scenario A2

Source: EC Green Paper (2007)

Too wet!





- Intercepts rain
- Allows rainwater to soak into the ground
- Temporary or permanent water storage
- Natural floodplain

Too
hot!





- Shade for people & building
- Evaporative cooling from vegetation & water



°C

35



14

Too dry!



Capturing & re-using rainwater

Smaller
scale



Larger
scale

GRaBS

- Green and blue space adaptation for urban areas and eco-towns
- Valuable resource for adaptation via green infrastructure
- www.grabs-eu.org

Adaptation to climate change using
green and blue infrastructure

A database of case studies



Aleksandra Kazmierczak and Jeremy Carter
University of Manchester

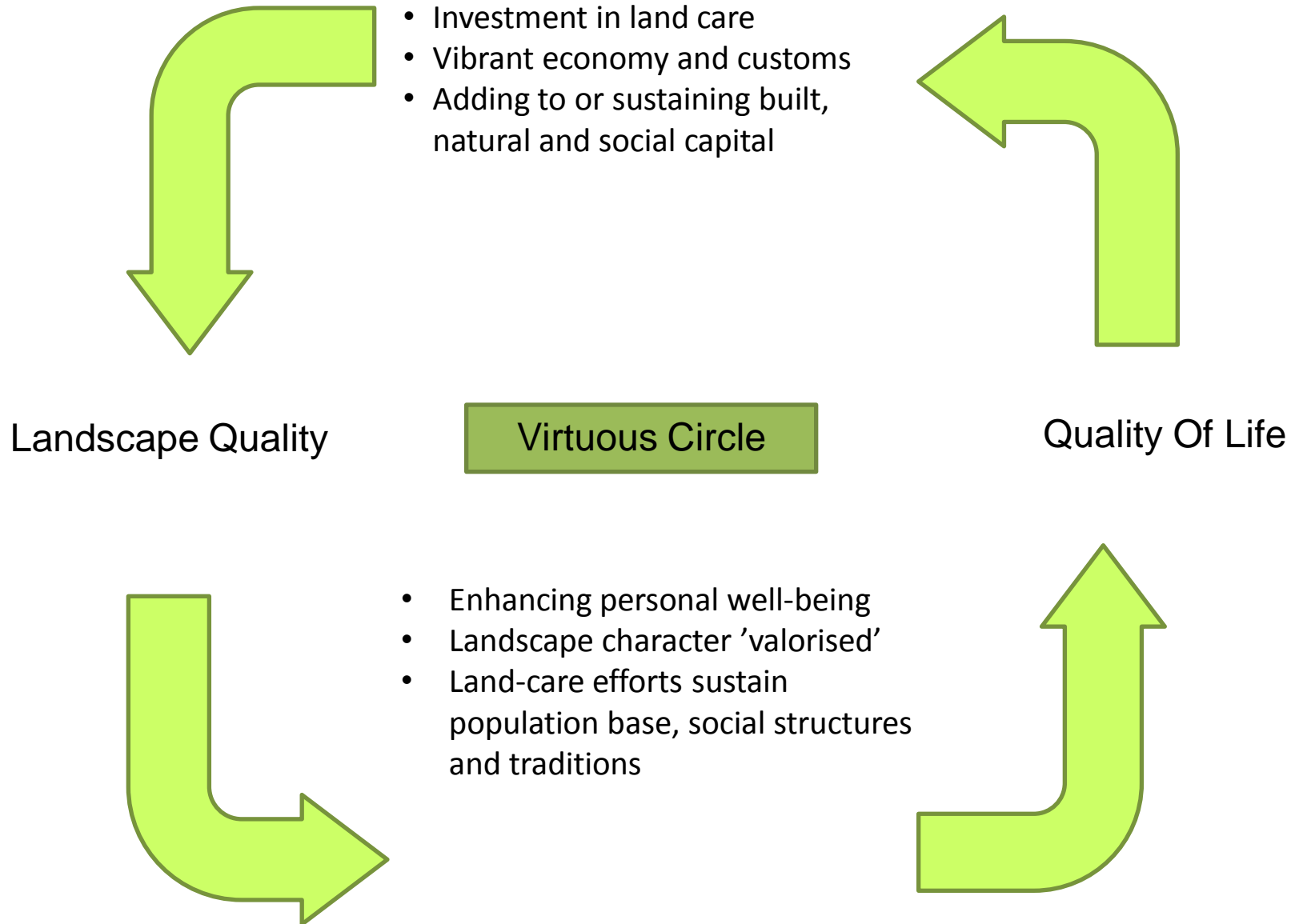
The public park – an enduring investment?

“As to a park, when the principal outlay has been made, the results may, and under good management must, ... be increasing in value at a constantly advancing rate of increase, and never cease to increase as long as the city endures”

Frederick Law Olmsted, joint creator of Central Park, New York



The virtuous circle underlying landscape condition



The Land Trust

The Land Trust is a recently established UK charity with in excess of £50 million endowed funding and a substantial estate, including the restored Liverpool Festival Gardens.



Conclusion

- Parks are hubs of our green infrastructure
- Parks are multi-functional landscapes delivering a wide range of benefits
- Benefits to public health and moderation of climate change impacts will increase through the 21st century
- Innovation and pooling of resources through a green infrastructure approach will bring together a wider range of funders

The measure of any great civilisation is its cities and a measure of a city's greatness is to be found in the quality of its public spaces, its parks and squares.

John Ruskin

