

metropoleruhr  
 Regionalverband Ruhr

**Parks and Gardens in NRW  
 Regional policies:  
 Emscher Landscape Park**

Wokshop "Economy 1"


INTERREG IVC  
 INTERREG IVC  
 ERDF - LEADER - ERDF

**HYBRID PARKS**

Michael Schwarze-Rodrian  
 RVR / European and Regional Networks  
 Schloss Dyck  
 15.10.2012

Regionalverband Ruhr | European and regional networks | Hybrid Parks | NRW Emscher Landscape Park | Dyck - 15.10.2012 | M. Schwarze-Rodrian


**Emscher Landscape Park & Ruhr**



**Attractive urban Landscapes  
 = new basis for economic development**

Regionalverband Ruhr | European and regional networks | Hybrid Parks | NRW Emscher Landscape Park | Dyck - 15.10.2012 | M. Schwarze-Rodrian

Welcome to **NRW**  
 Welcome to **Schloss Dyck**  
 Welcome to **RUHR**



**HYBRID PARKS**

Regionalverband Ruhr | European and regional networks | Hybrid Parks | NRW Emscher Landscape Park | Dyck - 15.10.2012 | M. Schwarze-Rodrian

**1**



**SWEDEN**



**Linköping**  
 Östergötlands län  
 Schweden  
 Europa

Regionalverband Ruhr | European and regional networks | Hybrid Parks | NRW Emscher Landscape Park | Dyck - 15.10.2012 | M. Schwarze-Rodrian

Välkommen till Linköping - där idéer blir verklighet  
 Willkommen in Linköping - wo Ideen Wirklichkeit werden

**EAST SWEDEN**



Life as you want it.

City pulse or rural charm?

Regionalverband Ruhr | European and regional networks | Hybrid Parks | NRW Emscher Landscape Park | Dyck - 15.10.2012 | M. Schwarze-Rodrian

**2**



**SWEDEN**

**Lundagård**



**Lund**  
 Skåne län  
 Schweden  
 Europa

Regionalverband Ruhr | European and regional networks | Hybrid Parks | NRW Emscher Landscape Park | Dyck - 15.10.2012 | M. Schwarze-Rodrian

Välkommen till Lund - idéernas stad!  
Willkommen in Lund - Stadt der Ideen!

REGIONALVERBAND RUHR | European and regional networks | Hybrid Parks | NRW | Enscher Landscape Park | Dyck - 15.10.2012 | M. Schwarze-Rodrian

3

Paola, Raħal Ġdid, Malta, Europa

REGIONALVERBAND RUHR | European and regional networks | Hybrid Parks | NRW | Enscher Landscape Park | Dyck - 15.10.2012 | M. Schwarze-Rodrian

PIAZZA ANTONIO DE PAULE

REGIONALVERBAND RUHR | European and regional networks | Hybrid Parks | NRW | Enscher Landscape Park | Dyck - 15.10.2012 | M. Schwarze-Rodrian

4

Slaski Ogród Botaniczny, Związek Stowarzyszeń, Silesian Botanical Garden, Mikołaj, Poland

REGIONALVERBAND RUHR | European and regional networks | Hybrid Parks | NRW | Enscher Landscape Park | Dyck - 15.10.2012 | M. Schwarze-Rodrian

REGIONALVERBAND RUHR | European and regional networks | Hybrid Parks | NRW | Enscher Landscape Park | Dyck - 15.10.2012 | M. Schwarze-Rodrian

5

Turun yliopisto, University of Turku

REGIONALVERBAND RUHR | European and regional networks | Hybrid Parks | NRW | Enscher Landscape Park | Dyck - 15.10.2012 | M. Schwarze-Rodrian

Turun yliopisto  
University of Turku

STUDYING Welcome to the University of quality and vision

Regionalverband Ruhr | European and regional networks | Hybrid Parks | NRW | Emscher Landscape Park | Dyck - 15.10.2012 | M. Schwarze-Rodrian

6

Greece

Periferia Notiou Aegaiou  
Region of South Aegean

Rhodos

Regionalverband Ruhr | European and regional networks | Hybrid Parks | NRW | Emscher Landscape Park | Dyck - 15.10.2012 | M. Schwarze-Rodrian

ΠΕΡΙΦΕΡΕΙΑ ΝΟΤΙΟΥ ΑΙΓΑΙΟΥ

ΚΟΡΣΕ ΚΟΜΒΟΣ ΤΥΛΙΝΕ ΚΕΛΛΙΑΓΕΤΣΗΣ ΔΙΟΫΣΙΑ

Regionalverband Ruhr | European and regional networks | Hybrid Parks | NRW | Emscher Landscape Park | Dyck - 15.10.2012 | M. Schwarze-Rodrian

7

Italy

Regione Umbria  
Direzione regionale Risorsa Umbria.  
Federalismo, risorse finanziarie, umane e strumentali

Servizio aree protette, valorizzazione sistemi naturalistici e paesaggistici

Perugia

Regionalverband Ruhr | European and regional networks | Hybrid Parks | NRW | Emscher Landscape Park | Dyck - 15.10.2012 | M. Schwarze-Rodrian

Regione Umbria

Assessorato

**L'Umbria**

Regionalverband Ruhr | European and regional networks | Hybrid Parks | NRW | Emscher Landscape Park | Dyck - 15.10.2012 | M. Schwarze-Rodrian

Regione Umbria

Assessorato

**semplifica**

Regionalverband Ruhr | European and regional networks | Hybrid Parks | NRW | Emscher Landscape Park | Dyck - 15.10.2012 | M. Schwarze-Rodrian





Regionalverband Ruhr | European and regional networks | Hybrid Parks | NRW | EMScher Landscape Park | Dyck - 15.10.2012 | M. Schwarze-Rodrian



Regionalverband Ruhr | European and regional networks | Hybrid Parks | NRW | EMScher Landscape Park | Dyck - 15.10.2012 | M. Schwarze-Rodrian



Regionalverband Ruhr | European and regional networks | Hybrid Parks | NRW | EMScher Landscape Park | Dyck - 15.10.2012 | M. Schwarze-Rodrian



Regionalverband Ruhr | European and regional networks | Hybrid Parks | NRW | EMScher Landscape Park | Dyck - 15.10.2012 | M. Schwarze-Rodrian



Regionalverband Ruhr | European and regional networks | Hybrid Parks | NRW | EMScher Landscape Park | Dyck - 15.10.2012 | M. Schwarze-Rodrian



Regionalverband Ruhr | European and regional networks | Hybrid Parks | NRW | EMScher Landscape Park | Dyck - 15.10.2012 | M. Schwarze-Rodrian

10

**Austria**

**Umweltschutzverein Buerger und Umwelt, Geschäftsbereich Natur im Garten**  
 Environmental Protection Association Citizen and Environment, Department Nature in the Garden

Tulln an der Donau

Regionalverband Ruhr | European and regional networks | Hybrid Parks | NRW | Enscher Landscape Park | Dyck - 15.10.2012 | M. Schwarz-Rodrian

Regionalverband Ruhr | European and regional networks | Hybrid Parks | NRW | Enscher Landscape Park | Dyck - 15.10.2012 | M. Schwarz-Rodrian

11

**France**

**Association des Parcs et Jardins de Bretagne**  
 Association of Parks and Gardens in Brittany

Rennes

Regionalverband Ruhr | European and regional networks | Hybrid Parks | NRW | Enscher Landscape Park | Dyck - 15.10.2012 | M. Schwarz-Rodrian

Regionalverband Ruhr | European and regional networks | Hybrid Parks | NRW | Enscher Landscape Park | Dyck - 15.10.2012 | M. Schwarz-Rodrian

12

**United Kingdom**

**Cheshire West and Chester Council**  
 Cheshire West and Chester Council

Chester

Regionalverband Ruhr | European and regional networks | Hybrid Parks | NRW | Enscher Landscape Park | Dyck - 15.10.2012 | M. Schwarz-Rodrian

Cheshire West and Chester

it online.  
 port it, pay for it, find it

Business Your Council News and Views My Area

Page > Tourism & leisure, parks and events

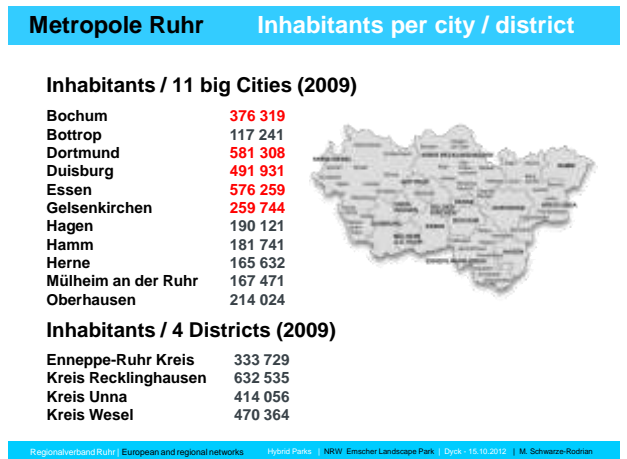
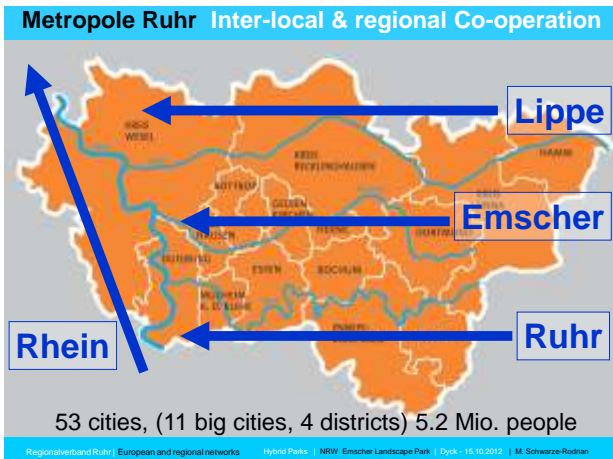
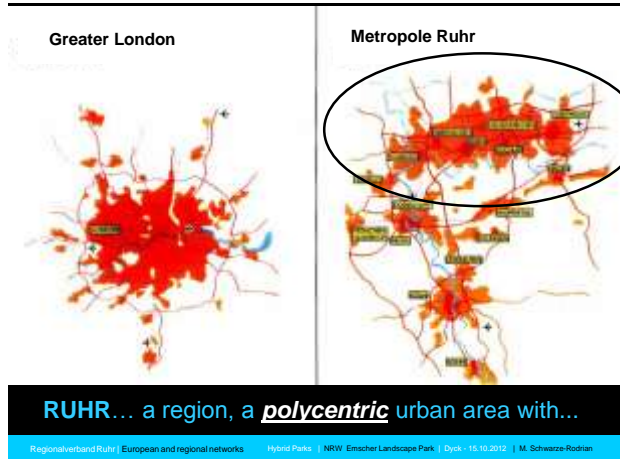
isure, parks and events

op tasks in this section

- Leisure centres and swimming pools
- Parks, gardens and open spaces
- Play areas
- Markets

Regionalverband Ruhr | European and regional networks | Hybrid Parks | NRW | Enscher Landscape Park | Dyck - 15.10.2012 | M. Schwarz-Rodrian





**Metropole Ruhr Inter-local & regional Co-operation**

**Teamwork**  
A group of independent cities are going through shared, simultaneous and comprehensive transformation.  
**WE are going together**  
53 cities, (11 big cities, 4 districts) 5.2 Mio. people

Regionalverband Ruhr | European and regional networks | Hybrid Parks | NRW | Emischer Landscape Park | Dyck - 15.10.2012 | M. Schwarze-Rodrian

**Strategic Co-operations for sustainable Ruhr**



**Strategic Co-operations for sustainable Ruhr**

**Concept Ruhr & Chance of Change**

**Status Report 2011 / 2012**

**June 2012**

Regionalverband Ruhr | European and regional networks | Hybrid Parks | NRW | Emischer Landscape Park | Dyck - 15.10.2012 | M. Schwarze-Rodrian

**Strategic Co-operations for sustainable Ruhr**



**Strategic Co-operations for sustainable Ruhr**

**KONZEPT RUHR 2010 -**  
Die Themen der kommenden Dekade

**2010/2011 – Die Themen der kommenden Dekade 2020**

Integrating strategies

City & Knowledge & Climate = **RUHR 2020**

RUH: Minister für Raum- und Städtebaupolitik / Verfassung Region Ruhr

Regionalverband Ruhr | European and regional networks | Hybrid Parks | NRW | Emischer Landscape Park | Dyck - 15.10.2012 | M. Schwarze-Rodrian

**Strategic Co-operations for sustainable Ruhr**

**EU 2014 – 2020 / EFRE**  
**ITI**  
(Integrated Territorial Investments)  
**Innovative urbane Räume Ruhr**  
Innovative urban areas Ruhr

Regionalverband Ruhr | European and regional networks | Hybrid Parks | NRW | Emischer Landscape Park | Dyck - 15.10.2012 | M. Schwarze-Rodrian

MegaCities Conference - 12.10.2010

**Prof. Klaus Töpfer – Opening Keynote Speaker** (former UNEP)  
*Solutions and Good Practice for Visionary Urban Development*

Regionalverband Ruhr | European and regional networks | Hybrid Parks | NRW | Enscher Landscape Park | Dyck - 15.10.2012 | M. Schwarze-Rodrian

MegaCities Conference - 12.10.2010

**Prof. Klaus Töpfer**  
*Solutions and Good Practice for Visionary Urban Development*

- ...Transformation practice at the Ruhr...
- ...Recycling of old industrial buildings and sites...
- ...Renewing the Economy...
- ... Cooperation of the cities...

Regionalverband Ruhr | European and regional networks | Hybrid Parks | NRW | Enscher Landscape Park | Dyck - 15.10.2012 | M. Schwarze-Rodrian

**2**

**Transformation RUHR**  
 Structural change

Regionalverband Ruhr | European and regional networks | Hybrid Parks | NRW | Enscher Landscape Park | Dyck - 15.10.2012 | M. Schwarze-Rodrian

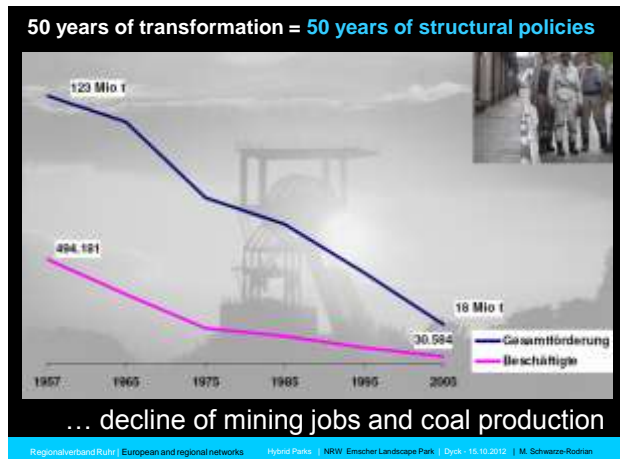
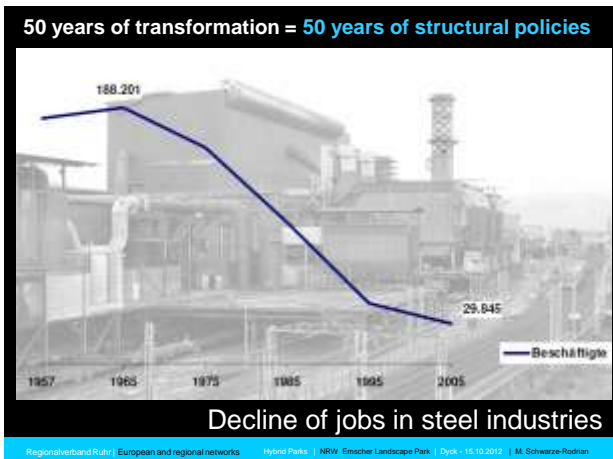
**The story of the RUHR**  
 is the story of **Change**.

**It started in the begining 60s,**  
 followed in the 70s, 80s, 90s...

**Urban & economic & cultural & social & ... „re“-generation**

**Today: Strategic Co-operations for sustainable Ruhr 2020+**

Regionalverband Ruhr | European and regional networks | Hybrid Parks | NRW | Enscher Landscape Park | Dyck - 15.10.2012 | M. Schwarze-Rodrian





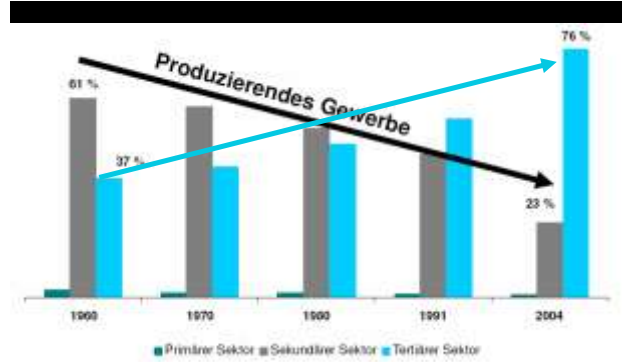
## Finishing hard-coal mining 2007- 2012 - 2018



Auslaufbergbau = Anpassungskurs bis 2012 ohne Wenn und Aber



Das Unternehmen schrumpft bis 2012 um die Hälfte.



the structural change goes on ...

## Metropole Ruhr | Clusters of industrial development

### Energy



- 295 businesses
- 52,000 employees
- EUR 47 billion annual turnover
- 2 % export rate (NRW)
- 3,600 engineers

### Logistics



- 5,750 businesses
- 90,000 employees
- EUR 10.6 billion annual turnover
- 340 engineers

### Chemistry



- 225 businesses
- 23,000 employees
- EUR 15 billion annual turnover
- 51 % export rate (NRW)
- 1,400 engineers

## Metropole Ruhr | Clusters of industrial development

### Health industry



- 122 hospitals and clinics
- 1,100 care homes and out-patient services
- 243,800 employees
- 9,000 GPs and specialist doctors
- 1,350 chemists (distribution network)
- EUR 10.7 billion annual turnover

### Information and communication technology



- 7,500 businesses
- 48,000 employees
- EUR 15 billion annual turnover,
- 60 % export rate (NRW)

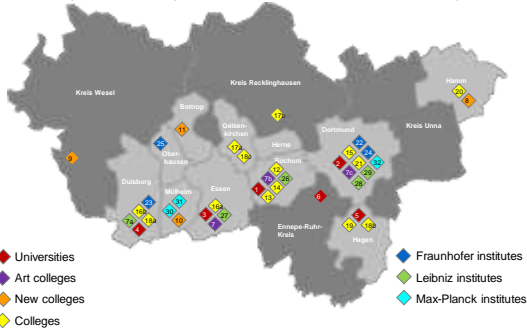
### Microsystem technology



- more than 40 businesses (focus on Dortmund)
- 2,000 employees
- EUR 344 billion annual turnover

## Metropole Ruhr | Colleges and universities

Since the start of college & universities foundation in the 1960s, the Ruhr metropolis has a unique and state-of-the-art education landscape.



## Metropole Ruhr | Students and graduates

### Ruhr metropolis in total:

- students: **163.000** students in the 2008/09 winter semester  
⇒ 26 % of all students enrolled in the state NRW
- graduates: **8.300** passed exams in the 2007/2008 winter semester  
⇒ 28% of all exams taken in the state NRW

### Current numbers of students (WS 2008/09) and graduates (WS 2007/08) at the universities of the Ruhr metropolis:

- University of Duisburg-Essen: 31,000 students, 2,200 graduates
- Ruhr University of Bochum: 30,700 students, 2,100 graduates
- Technical University of Dortmund: 21,600 students, 1,000 graduates
- Distance University of Hagen: 42,000 students, 900 graduates
- Private University of Witten/Herdecke: 1,000 students, 130 graduates

### Current numbers of students (WS 2008/09) and graduates (WS 2007/08) at the colleges of the Ruhr metropolis:

- Total: 37,000 students, 2,000 graduates

## Metropole Ruhr | University Alliance

Merger of the universities of  
Bochum  
Dortmund and  
Duisburg-Essen



in 2007 under a common umbrella of the **University Alliance Ruhr Metropolis (UAMR)**

Unique:

- 89,000 students and 1,250 professors
- Unachieved range of subjects, which opens numerous study options through combination
- Bringing in line of the three neighbouring universities of Bochum, Dortmund and Duisburg-Essen, which nevertheless remain independent



Objectives:

- Targeted expansion and strengthening of the services of the three partners
- Further development of the joint research and teaching focuses
- Internationalisation of the college location

Superordinate vision:

- Establishment of the University Alliance Ruhr Metropolis as an excellent location in the national and international science and study landscape

Regionalverband Ruhr | European and regional networks | Hybrid Parks | NRW | Emscher Landscape Park | Dyck - 15.10.2012 | M. Schwarze-Rodian

# 3

## Complicated questions International exchange & lessons learned at the RUHR

Regionalverband Ruhr | European and regional networks | Hybrid Parks | NRW | Emscher Landscape Park | Dyck - 15.10.2012 | M. Schwarze-Rodian



Regionalverband Ruhr | European and regional networks | Hybrid Parks | NRW | Emscher Landscape Park | Dyck - 15.10.2012 | M. Schwarze-Rodian

knowing & comparing & sharing experiences

## Royal Commission for the future of Toronto Waterfront (1980s)

Honorable David Crombie

1920  
1973  
1995

Regionalverband Ruhr | European and regional networks | Hybrid Parks | NRW | Emscher Landscape Park | Dyck - 15.10.2012 | M. Schwarze-Rodian

The story of integrated strategies started with international exchange:

**The Power Plant Art Gallery**

**Radical new thinking has to start somewhere.**

Royal Commission for the future of Toronto Waterfront

Lake Ontario Waterfront Trail

Regionalverband Ruhr | European and regional networks | Hybrid Parks | NRW | Emscher Landscape Park | Dyck - 15.10.2012 | M. Schwarze-Rodian

Richard Serra  
Steel plate for the Ruhr / Brämme für das Ruhrgebiet

Regionalverband Ruhr | European and regional networks | Hybrid Parks | NRW | Emscher Landscape Park | Dyck - 15.10.2012 | M. Schwarze-Rodian







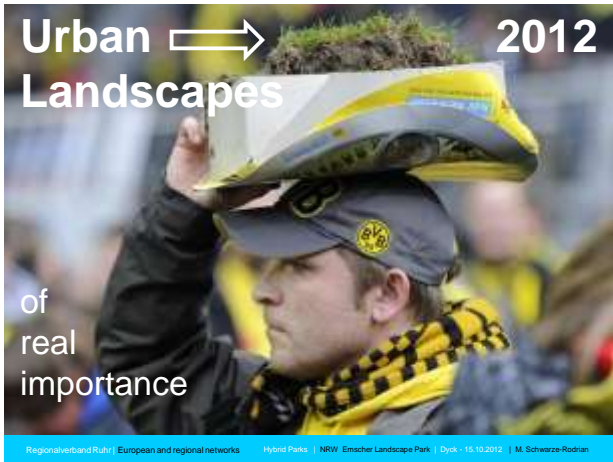













### The story of Emscher Park




the fascination of an unique experiment in the Ruhr


**International Building Exhibition Emscher Park (IBA) 1989 – 1999**

Regionalverband Ruhr | European and regional networks | Hybrid Parks | NRW Emscher Landscape Park | Dyck - 15.10.2012 | M. Schwärze-Rodrian



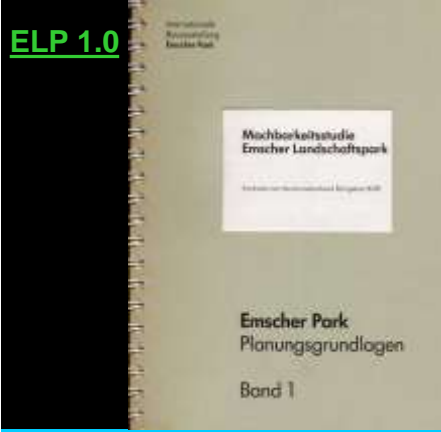
**Preparation – Five studies to design the IBA Emscher Park (1988/89)**

Nr.1 **Feasibility study**  
Emscher Landscape Park (KVR)



**Analysis**

Regionalverband Ruhr | European and regional networks | Hybrid Parks | NRW Emscher Landscape Park | Dyck - 15.10.2012 | M. Schwärze-Rodrian



**ELP 1.0**

Schriftenreihe der IBA

**(1990)**

Regionalverband Ruhr | European and regional networks | Hybrid Parks | NRW Emscher Landscape Park | Dyck - 15.10.2012 | M. Schwärze-Rodrian



**1989**  
Start ELP

**No. 1**  
Emscher Landscape Park (ELP)

&

**No. 2**  
Renewal of the Emscher Riversystem



Regionaleverband Ruhr | European and regional networks | Hybrid Parks | NRW Emscher Landscape Park | Dyck - 15.10.2012 | M. Schwarze-Rodrian

**Strategy to transform and to develop an old industrial region: 6 main fields:**



- Emscher Landscape Park
- Regeneration of the Emscher River System
- Working in the Park / Recycling for production
- Industrial Monuments / Industrial Heritage
- Housing Construction and Urban Development
- Social Initiatives, Employment and Training

Regionaleverband Ruhr | European and regional networks | Hybrid Parks | NRW Emscher Landscape Park | Dyck - 15.10.2012 | M. Schwarze-Rodrian

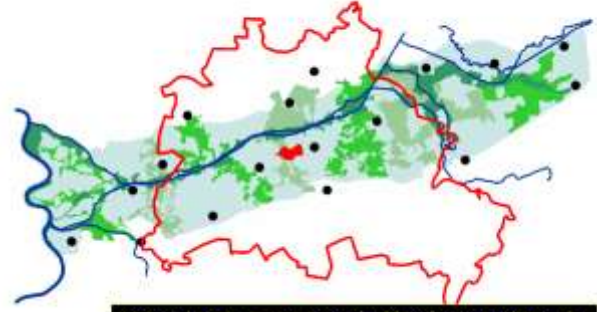
**Emscher Landscape Park & RuhrRegion**



**Attractive urban Landscapes = new basis for economic development**

Regionaleverband Ruhr | European and regional networks | Hybrid Parks | NRW Emscher Landscape Park | Dyck - 15.10.2012 | M. Schwarze-Rodrian

**Emscher Landschaftspark**



**regional park - compared with a famous city-park**

Regionaleverband Ruhr | European and regional networks | Hybrid Parks | NRW Emscher Landscape Park | Dyck - 15.10.2012 | M. Schwarze-Rodrian

**Emscher Landschaftspark 2010**



**regional park - compared with another famous city-park ...**

Regionaleverband Ruhr | European and regional networks | Hybrid Parks | NRW Emscher Landscape Park | Dyck - 15.10.2012 | M. Schwarze-Rodrian

**Planning-systeme**


Emscher Landscape Park 1990's (3 levels)

**Moderation:**  
IBA Emscher Park / KVR  
AK Emscher Landschaftspark

**Regional planning:**  
Headplan / KVR

**7 x inter-local planning:**  
7 Frameplans  
Regional Greenbelts A - G  
IKAGs + Contracted Planners

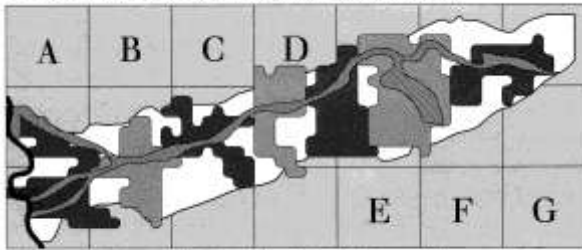
**Stepstones of ELP**  
Design for the single projects (Competitions)  
(Planning-phase 1990 - 1996)



Regionaleverband Ruhr | European and regional networks | Hybrid Parks | NRW Emscher Landscape Park | Dyck - 15.10.2012 | M. Schwarze-Rodrian



Die Regionalen Grünzüge im Emscher Landschaftspark



Dahlburg Oberhausen Mülheim	Oberhausen Mülheim Bottrop Ponitz	Glückauf Bottrop Essen Herbisdorfen	Geislarbeiten Hemer Hemer Reichlinghausen Recklinghausen	Reichlinghausen Bachum Hemer Lamperlinghausen Recklinghausen	Waldrop Lodrop Kassell Hortensaal	Lünen Recklinghausen Kassell Königsborn Dortmund
-----------------------------------	--	--	--	--	--	--

**Co-operation of neighbour-cities**

7 inter-local workinggroups (per Greenbelt A – G)

Regionalverband Ruhr | European and regional networks | Hybrid Parks | NRW Emscher Landscape Park | Dyck - 15.10.2012 | M. Schwarze-Rodrian



1991

*Sustainable urban development  
needs and takes time*

Regionalverband Ruhr | European and regional networks | Hybrid Parks | NRW Emscher Landscape Park | Dyck - 15.10.2012 | M. Schwarze-Rodrian

**ELP 2.0**



**PARKBERICHT**  
EMSCHER  
LANDSCHAFTS-  
PARK

Halftime of  
IBA

Interimreport  
1995 / 1996

Headplan ELP

Parkreport  
- 1996 -

Regionalverband Ruhr | European and regional networks | Hybrid Parks | NRW Emscher Landscape Park | Dyck - 15.10.2012 | M. Schwarze-Rodrian



Karl Ganser

Director of IBA Emscher Park

Regionalverband Ruhr | European and regional networks | Hybrid Parks | NRW Emscher Landscape Park | Dyck - 15.10.2012 | M. Schwarze-Rodrian

*Shortstory  
of IBA  
= more  
than 100  
single  
projects in  
17 cities,  
everyone:  
unique,  
together:  
a new  
network*



Die Internationale Bauausstellung (IBA) Emscher Park vereint mehr als 100 Einzelprojekte in 17 Städten der Emscher-Region. Jedes dieser Projekte ist einzigartig. Alle Maßnahmen zusammen ergeben ein neues Netzwerk in der Industrielandschaft von einst.

Regionalverband Ruhr | European and regional networks | Hybrid Parks | NRW Emscher Landscape Park | Dyck - 15.10.2012 | M. Schwarze-Rodrian

**Directors  
view**

Karl  
Ganser:

*„Love  
at the  
second  
sight „*



Karl Ganser  
**Liebe auf den zweiten Blick**  
Internationale Bauausstellung Emscher Park

Regionalverband Ruhr | European and regional networks | Hybrid Parks | NRW Emscher Landscape Park | Dyck - 15.10.2012 | M. Schwarze-Rodrian



1996

One result of IBA Emscher Park: **Network of people**

Regionalverband Ruhr | European and regional networks | Hybrid Parks | NRW Emscher Landscape Park | Dyck - 15.10.2012 | M. Schwärze-Rodrian



2006:

Continuing regional and interlocal cooperation  
Making new plans and creating new projects for the **next 15 years**

Regionalverband Ruhr | European and regional networks | Hybrid Parks | NRW Emscher Landscape Park | Dyck - 15.10.2012 | M. Schwärze-Rodrian



7

**Masterplan  
Emscher Landscape Park  
(2001 – 2006)**

Regionalverband Ruhr | European and regional networks | Hybrid Parks | NRW Emscher Landscape Park | Dyck - 15.10.2012 | M. Schwärze-Rodrian



2001

1. ELP 2010  
Newspaper

Quo Vadis  
After the IBA

Documentation  
of the  
1. ELP 2010  
Workshop

Regionalverband Ruhr | European and regional networks | Hybrid Parks | NRW Emscher Landscape Park | Dyck - 15.10.2012 | M. Schwärze-Rodrian



2002

2nd ELP 2010  
Newspaper

Working  
In the Park

Documentation  
of the  
2nd ELP 2010  
Workshop

Regionalverband Ruhr | European and regional networks | Hybrid Parks | NRW Emscher Landscape Park | Dyck - 15.10.2012 | M. Schwärze-Rodrian



2003

3rd ELP 2010  
Newspaper

Interim-  
Report

Documentation  
of the staging phase  
Masterplan  
ELP 2010

Regionalverband Ruhr | European and regional networks | Hybrid Parks | NRW Emscher Landscape Park | Dyck - 15.10.2012 | M. Schwärze-Rodrian



**2010**

**2004**

**Masterplan ELP 2010**

**Draft**

Masterplan Emscher

**Emscher Landschaftspark**

Regionalverband Ruhr | European and regional networks | Hybrid Parks | NRW Emscher Landscape Park | Dyck - 15.10.2012 | M. Schwarze-Rodrian

**2006**

Masterplan Emscher Landschaftspark 2010

**Masterplan Emscher Landschaftspark 2010**

Regionalverband Ruhr | European and regional networks | Hybrid Parks | NRW Emscher Landscape Park | Dyck - 15.10.2012 | M. Schwarze-Rodrian

**2006**

**Masterplan ELP 2010**  
a book, a map, a DVD  
& online: [www.elp2010.de](http://www.elp2010.de)  
(published : Januar 2006)

Regionalverband Ruhr | European and regional networks | Hybrid Parks | NRW Emscher Landscape Park | Dyck - 15.10.2012 | M. Schwarze-Rodrian

**Emscher Landschaftspark & RuhrRegion**

**Regional Parksystem = between 20 cities and in the center of the agglomeration**

Regionalverband Ruhr | European and regional networks | Hybrid Parks | NRW Emscher Landscape Park | Dyck - 15.10.2012 | M. Schwarze-Rodrian

**The sustainable challenge: Co-Operation**

Masterplan Emscher Landschaftspark 2010

**20 cities, 3 districts, 5 departments of the state**  
**Working together for a sustainable future**

Regionalverband Ruhr | European and regional networks | Hybrid Parks | NRW Emscher Landscape Park | Dyck - 15.10.2012 | M. Schwarze-Rodrian

**The sustainable challenge: Co-Operation**

Masterplan Emscher Landschaftspark 2010

**Sharing & supporting the idea and making it happen:**  
**Emscher Landschaftspark 2010**

Regionalverband Ruhr | European and regional networks | Hybrid Parks | NRW Emscher Landscape Park | Dyck - 15.10.2012 | M. Schwarze-Rodrian

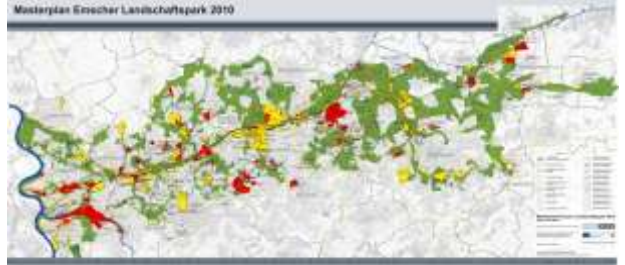
# Emscher Landschaftspark 2010



**Masterplan ELP 2012** – detailed maps, data & tasks

Regionalverband Ruhr | European and regional networks | Hybrid Parks | NRW Emscher Landscape Park | Dyck - 15.10.2012 | M. Schwarze-Rodrian

# Emscher Landschaftspark 2010



**Projects** – 178 ready + 269 under construction / planned

Regionalverband Ruhr | European and regional networks | Hybrid Parks | NRW Emscher Landscape Park | Dyck - 15.10.2012 | M. Schwarze-Rodrian

# Emscher Landschaftspark 2010



**Park-Infrastructure** – Bikeways, VisitorCenters, Service

Regionalverband Ruhr | European and regional networks | Hybrid Parks | NRW Emscher Landscape Park | Dyck - 15.10.2012 | M. Schwarze-Rodrian

# Emscher Landschaftspark 2010



**New Emscher Valley** – Leadproject - coming 15 years

Regionalverband Ruhr | European and regional networks | Hybrid Parks | NRW Emscher Landscape Park | Dyck - 15.10.2012 | M. Schwarze-Rodrian

**2006**



**= ELP Version 4.0**

*(from Microsoft to LINUX, from Bill Gates to the community of the users)*

**ELP Version 1.0**  
= Feasibilitystudy  
(1989)

**ELP Version 2.0**  
= Headplan and  
Frameplans (1996)

**ELP Version 3.0**  
= IBA Finale (1999)

**Masterplan ELP 2010** - platform for the coming development of the regional parksystem ... *contracted by partners*

Regionalverband Ruhr | European and regional networks | Hybrid Parks | NRW Emscher Landscape Park | Dyck - 15.10.2012 | M. Schwarze-Rodrian

**2010**



Unter freiem Himmel  
Emscher Landschaftspark

Under the Open Sky  
Emscher Landscape Park

Der Produktive Park



Regionalverband Ruhr | European and regional networks | Hybrid Parks | NRW Emscher Landscape Park | Dyck - 15.10.2012 | M. Schwarze-Rodrian



**2010**

UNTER FREIEM HIMMEL

ELP Future-Congress September 2010

emischer landschafts park

Regionalverband Ruhr | European and regional networks | Hybrid Parks | NRW | Emscher Landscape Park | Dyck - 15.10.2012 | M. Schwarze-Rodrian

**2012**

Emscher Landscape Park Visitor's Guide

The Emscher Landscape Park

emischer landschafts park

Regionalverband Ruhr | European and regional networks | Hybrid Parks | NRW | Emscher Landscape Park | Dyck - 15.10.2012 | M. Schwarze-Rodrian

**8**

Examples & projects  
**Zollverein**  
Emscher Landscape Park

Regionalverband Ruhr | European and regional networks | Hybrid Parks | NRW | Emscher Landscape Park | Dyck - 15.10.2012 | M. Schwarze-Rodrian



Kokery Zollverein

Regionalverband Ruhr | European and regional networks | Hybrid Parks | NRW | Emscher Landscape Park | Dyck - 15.10.2012 | M. Schwarze-Rodrian

**Question:**  
How to use a concrete platform of 900 m length in front of 300 former cokery-ovens ?

Regionalverband Ruhr | European and regional networks | Hybrid Parks | NRW | Emscher Landscape Park | Dyck - 15.10.2012 | M. Schwarze-Rodrian



**Question:**  
How to handle dimensions ?

Regionalverband Ruhr | European and regional networks | Hybrid Parks | NRW | Emscher Landscape Park | Dyck - 15.10.2012 | M. Schwarze-Rodrian



**Solution: Water !** (Speirs + Mayor / London)  
traditional method of landscape-architects:  
**The mirror** (a water basin...in front of the castle)  
material: steel belt 15 cm, 1.600 m & water & light

Regionalverband Ruhr | European and regional networks | Hybrid Parks | NRW | Emscher Landscape Park | Dyck - 15.10.2012 | M. Schwarze-Rodrian



**Result:** *New cultural perspectives for industrial landscapes*

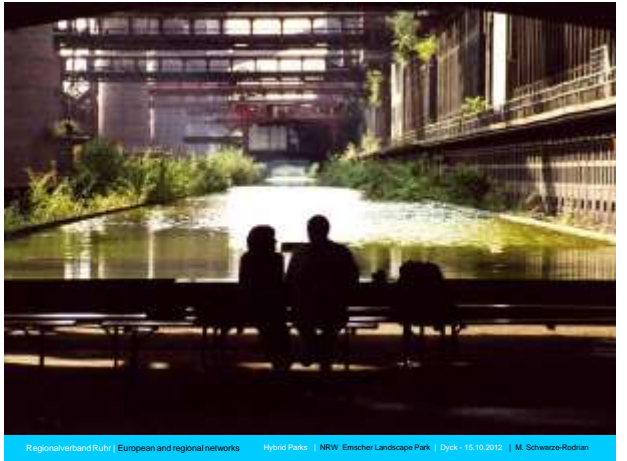
Regionalverband Ruhr | European and regional networks | Hybrid Parks | NRW | Emscher Landscape Park | Dyck - 15.10.2012 | M. Schwarze-Rodrian



Regionalverband Ruhr | European and regional networks | Hybrid Parks | NRW | Emscher Landscape Park | Dyck - 15.10.2012 | M. Schwarze-Rodrian



Regionalverband Ruhr | European and regional networks | Hybrid Parks | NRW | Emscher Landscape Park | Dyck - 15.10.2012 | M. Schwarze-Rodrian



Regionalverband Ruhr | European and regional networks | Hybrid Parks | NRW | Emscher Landscape Park | Dyck - 15.10.2012 | M. Schwarze-Rodrian





Regionalverband Ruhr | European and regional networks | Hybrid Parks | NRW | Emscher Landscape Park | Dyck - 15.10.2012 | M. Schwarze-Rodrian



Regionalverband Ruhr | European and regional networks | Hybrid Parks | NRW | Emscher Landscape Park | Dyck - 15.10.2012 | M. Schwarze-Rodrian



Regionalverband Ruhr | European and regional networks | Hybrid Parks | NRW | Emscher Landscape Park | Dyck - 15.10.2012 | M. Schwarze-Rodrian



Regionalverband Ruhr | European and regional networks | Hybrid Parks | NRW | Emscher Landscape Park | Dyck - 15.10.2012 | M. Schwarze-Rodrian



Regionalverband Ruhr | European and regional networks | Hybrid Parks | NRW | Emscher Landscape Park | Dyck - 15.10.2012 | M. Schwarze-Rodrian



Regionalverband Ruhr | European and regional networks | Hybrid Parks | NRW | Emscher Landscape Park | Dyck - 15.10.2012 | M. Schwarze-Rodrian

German-Polish Consultations

„Zum Essen nach Essen“

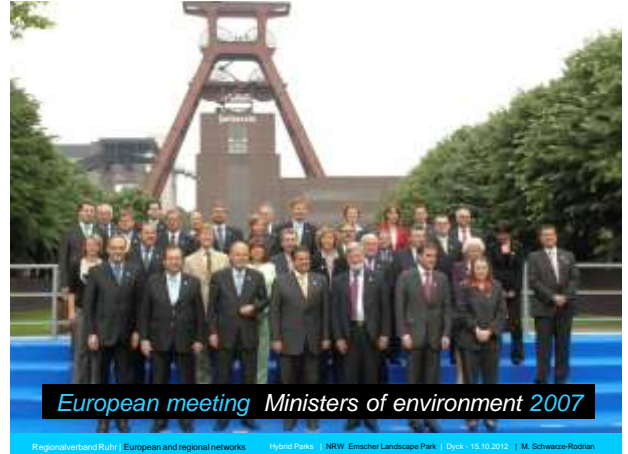
just: Dinner at Zollverein

22.09.2003

locations for events – with very special guests



Regionalverband Ruhr | European and regional networks | Hybrid Parks | NRW | Escher Landscape Park | Dyck - 15.10.2012 | M. Schwazze-Rodrian



Regionalverband Ruhr | European and regional networks | Hybrid Parks | NRW | Escher Landscape Park | Dyck - 15.10.2012 | M. Schwazze-Rodrian



Regionalverband Ruhr | European and regional networks | Hybrid Parks | NRW | Escher Landscape Park | Dyck - 15.10.2012 | M. Schwazze-Rodrian



Regionalverband Ruhr | European and regional networks | Hybrid Parks | NRW | Escher Landscape Park | Dyck - 15.10.2012 | M. Schwazze-Rodrian



Regionalverband Ruhr | European and regional networks | Hybrid Parks | NRW | Escher Landscape Park | Dyck - 15.10.2012 | M. Schwazze-Rodrian



Regionalverband Ruhr | European and regional networks | Hybrid Parks | NRW | Escher Landscape Park | Dyck - 15.10.2012 | M. Schwazze-Rodrian











Regionalverband Ruhr | European and regional networks | Hybrid Parks | NRW | Enscher Landscape Park | Dyck - 15.10.2012 | M. Schwarze-Rodrian



Regionalverband Ruhr | European and regional networks | Hybrid Parks | NRW | Enscher Landscape Park | Dyck - 15.10.2012 | M. Schwarze-Rodrian



Regionalverband Ruhr | European and regional networks | Hybrid Parks | NRW | Enscher Landscape Park | Dyck - 15.10.2012 | M. Schwarze-Rodrian



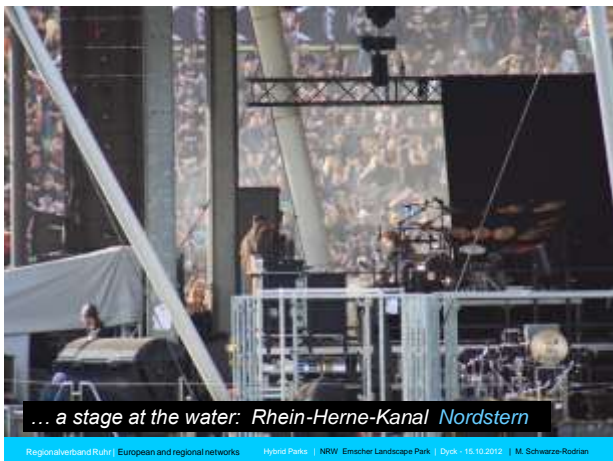
Regionalverband Ruhr | European and regional networks | Hybrid Parks | NRW | Enscher Landscape Park | Dyck - 15.10.2012 | M. Schwarze-Rodrian



Regionalverband Ruhr | European and regional networks | Hybrid Parks | NRW | Enscher Landscape Park | Dyck - 15.10.2012 | M. Schwarze-Rodrian



Regionalverband Ruhr | European and regional networks | Hybrid Parks | NRW | Enscher Landscape Park | Dyck - 15.10.2012 | M. Schwarze-Rodrian







... a stage at the water: Rhein-Herne-Kanal Nordstern

Regionalverband Ruhr | European and regional networks | Hybrid Parks | NRW | Emscher Landscape Park | Dyck - 15.10.2012 | M. Schwarze-Rodrian



a new address: Landscape- and Businesspark Nordstern

Regionalverband Ruhr | European and regional networks | Hybrid Parks | NRW | Emscher Landscape Park | Dyck - 15.10.2012 | M. Schwarze-Rodrian



Attractive for people: Landscape- and Businesspark Nordstern

Regionalverband Ruhr | European and regional networks | Hybrid Parks | NRW | Emscher Landscape Park | Dyck - 15.10.2012 | M. Schwarze-Rodrian



Attractive for people: Landscape- and Businesspark Nordstern

Regionalverband Ruhr | European and regional networks | Hybrid Parks | NRW | Emscher Landscape Park | Dyck - 15.10.2012 | M. Schwarze-Rodrian



...attractive for specialists: the transformation of Nordstern

Regionalverband Ruhr | European and regional networks | Hybrid Parks | NRW | Emscher Landscape Park | Dyck - 15.10.2012 | M. Schwarze-Rodrian



...attractive for specialists: the transformation of Nordstern

Regionalverband Ruhr | European and regional networks | Hybrid Parks | NRW | Emscher Landscape Park | Dyck - 15.10.2012 | M. Schwarze-Rodrian







Regionalverband Ruhr | European and regional networks | Hybrid Parks | NRW | Emscher Landscape Park | Dyck - 15.10.2012 | M. Schwärze-Rodrian



Regionalverband Ruhr | European and regional networks | Hybrid Parks | NRW | Emscher Landscape Park | Dyck - 15.10.2012 | M. Schwärze-Rodrian



Jahrenderhalle / Bochum West - 1924 1902

Regionalverband Ruhr | European and regional networks | Hybrid Parks | NRW | Emscher Landscape Park | Dyck - 15.10.2012 | M. Schwärze-Rodrian



Jahrenderhalle / Bochum West - 1997

Regionalverband Ruhr | European and regional networks | Hybrid Parks | NRW | Emscher Landscape Park | Dyck - 15.10.2012 | M. Schwärze-Rodrian



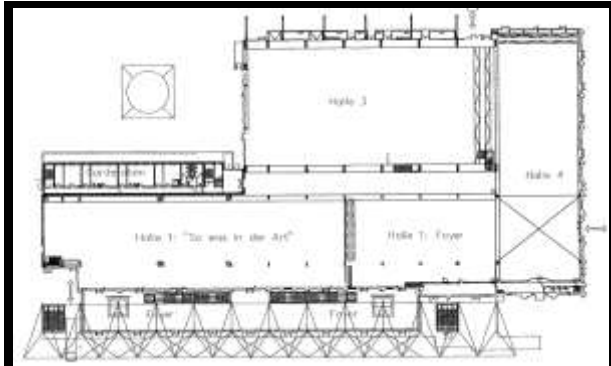
Jahrenderhalle / Bochum West - 1997

Regionalverband Ruhr | European and regional networks | Hybrid Parks | NRW | Emscher Landscape Park | Dyck - 15.10.2012 | M. Schwärze-Rodrian



Testing the qualities : 2000 Musik im Industrieraum

Regionalverband Ruhr | European and regional networks | Hybrid Parks | NRW | Emscher Landscape Park | Dyck - 15.10.2012 | M. Schwärze-Rodrian



*Creativity in design and ingeneering  
= Result of a competition*

Regionalverband Ruhr | European and regional networks | Hybrid Parks | NRW | Emscher Landscape Park | Dyck - 15.10.2012 | M. Schwarze-Rodrian



2002

Regionalverband Ruhr | European and regional networks | Hybrid Parks | NRW | Emscher Landscape Park | Dyck - 15.10.2012 | M. Schwarze-Rodrian



Jahrhunderthalle / Bochum West - 2003

Regionalverband Ruhr | European and regional networks | Hybrid Parks | NRW | Emscher Landscape Park | Dyck - 15.10.2012 | M. Schwarze-Rodrian



Jahrhunderthalle / Bochum West - 2003

*a new festival-hall : RUHRtriennale*

Regionalverband Ruhr | European and regional networks | Hybrid Parks | NRW | Emscher Landscape Park | Dyck - 15.10.2012 | M. Schwarze-Rodrian



Regionalverband Ruhr | European and regional networks | Hybrid Parks | NRW | Emscher Landscape Park | Dyck - 15.10.2012 | M. Schwarze-Rodrian



Regionalverband Ruhr | European and regional networks | Hybrid Parks | NRW | Emscher Landscape Park | Dyck - 15.10.2012 | M. Schwarze-Rodrian





Regionalverband Ruhr | European and regional networks | Hybrid Parks | NRW | Emscher Landscape Park | Dyck - 15.10.2012 | M. Schwarze-Rodrian



Regionalverband Ruhr | European and regional networks | Hybrid Parks | NRW | Emscher Landscape Park | Dyck - 15.10.2012 | M. Schwarze-Rodrian



*Construction hall of the Art*

**2003**

Regionalverband Ruhr | European and regional networks | Hybrid Parks | NRW | Emscher Landscape Park | Dyck - 15.10.2012 | M. Schwarze-Rodrian



**Ruhr Triennale** International Art Festival in the cathedrals of industrial heritage

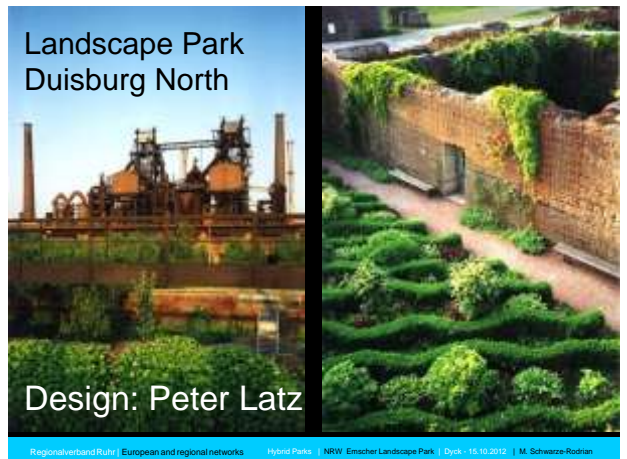
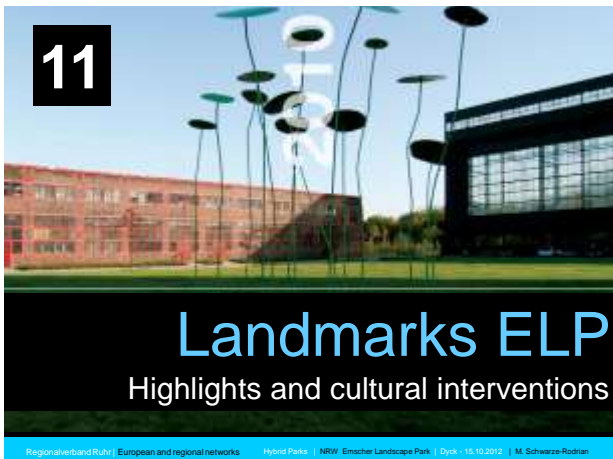
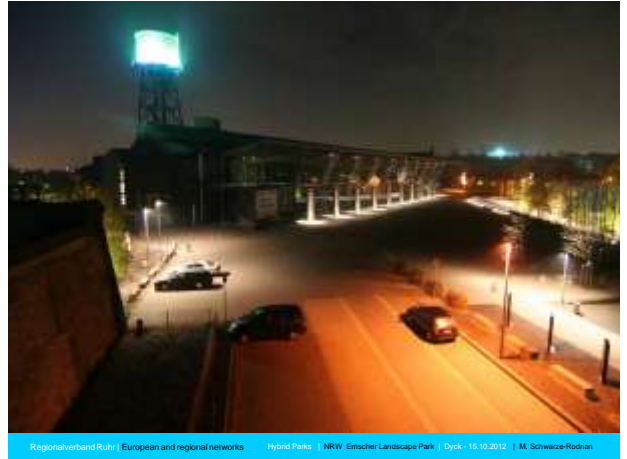
Regionalverband Ruhr | European and regional networks | Hybrid Parks | NRW | Emscher Landscape Park | Dyck - 15.10.2012 | M. Schwarze-Rodrian



Regionalverband Ruhr | European and regional networks | Hybrid Parks | NRW | Emscher Landscape Park | Dyck - 15.10.2012 | M. Schwarze-Rodrian



Regionalverband Ruhr | European and regional networks | Hybrid Parks | NRW | Emscher Landscape Park | Dyck - 15.10.2012 | M. Schwarze-Rodrian





Landscape Park  
Duisburg North



Light: Jonathan Park (London)

Regionalverband Ruhr | European and regional networks | Hybrid Parks | NRW | Emscher Landscape Park | Dyck - 15.10.2012 | M. Schwarze-Rodrian



Regionalverband Ruhr | European and regional networks | Hybrid Parks | NRW | Emscher Landscape Park | Dyck - 15.10.2012 | M. Schwarze-Rodrian



Light: Jonathan Park (London)

Regionalverband Ruhr | European and regional networks | Hybrid Parks | NRW | Emscher Landscape Park | Dyck - 15.10.2012 | M. Schwarze-Rodrian



Regionalverband Ruhr | European and regional networks | Hybrid Parks | NRW | Emscher Landscape Park | Dyck - 15.10.2012 | M. Schwarze-Rodrian



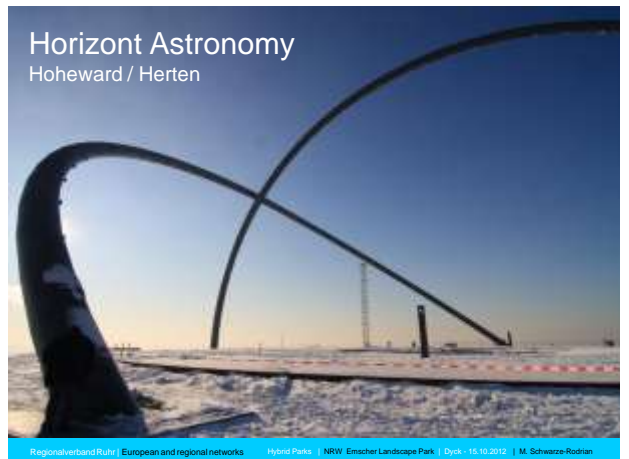
Tetrahedron / Tetraeder  
Bottrop

Regionalverband Ruhr | European and regional networks | Hybrid Parks | NRW | Emscher Landscape Park | Dyck - 15.10.2012 | M. Schwarze-Rodrian



Tetrahedron / Tetraeder  
Bottrop

Regionalverband Ruhr | European and regional networks | Hybrid Parks | NRW | Emscher Landscape Park | Dyck - 15.10.2012 | M. Schwarze-Rodrian





# Gasometer Oberhausen



Regionalverband Ruhr | European and regional networks | Hybrid Parks | NRW | Emscher Landscape Park | Dyck - 15.10.2012 | M. Schwarze-Rodrian



# Surched and found: Integrated & sustainable solutions

Regionalverband Ruhr | European and regional networks | Hybrid Parks | NRW | Emscher Landscape Park | Dyck - 15.10.2012 | M. Schwarze-Rodrian



# Surched and found: Integrated & sustainable solutions

Regionalverband Ruhr | European and regional networks | Hybrid Parks | NRW | Emscher Landscape Park | Dyck - 15.10.2012 | M. Schwarze-Rodrian



# Gasometer Oberhausen

Regionalverband Ruhr | European and regional networks | Hybrid Parks | NRW | Emscher Landscape Park | Dyck - 15.10.2012 | M. Schwarze-Rodrian



# Gasometer Oberhausen

Regionalverband Ruhr | European and regional networks | Hybrid Parks | NRW | Emscher Landscape Park | Dyck - 15.10.2012 | M. Schwarze-Rodrian



# Gasometer Oberhausen

Regionalverband Ruhr | European and regional networks | Hybrid Parks | NRW | Emscher Landscape Park | Dyck - 15.10.2012 | M. Schwarze-Rodrian







Regionalverband Ruhr | European and regional networks | Hybrid Parks | NRW Emscher Landscape Park | Dyck - 15.10.2012 | M. Schwarze-Rodrian



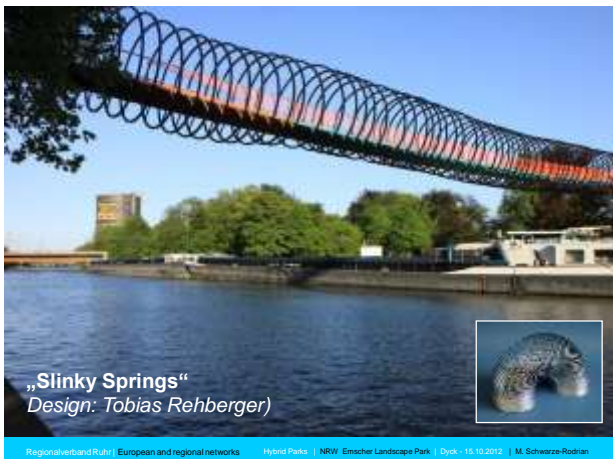
Regionalverband Ruhr | European and regional networks | Hybrid Parks | NRW Emscher Landscape Park | Dyck - 15.10.2012 | M. Schwarze-Rodrian



Regionalverband Ruhr | European and regional networks | Hybrid Parks | NRW Emscher Landscape Park | Dyck - 15.10.2012 | M. Schwarze-Rodrian



Regionalverband Ruhr | European and regional networks | Hybrid Parks | NRW Emscher Landscape Park | Dyck - 15.10.2012 | M. Schwarze-Rodrian



Regionalverband Ruhr | European and regional networks | Hybrid Parks | NRW Emscher Landscape Park | Dyck - 15.10.2012 | M. Schwarze-Rodrian



Regionalverband Ruhr | European and regional networks | Hybrid Parks | NRW Emscher Landscape Park | Dyck - 15.10.2012 | M. Schwarze-Rodrian



Regionalverband Ruhr | European and regional networks | Hybrid Parks | NRW | Enscher Landscape Park | Dyck - 15.10.2012 | M. Schwarze-Rodrian



Regionalverband Ruhr | European and regional networks | Hybrid Parks | NRW | Enscher Landscape Park | Dyck - 15.10.2012 | M. Schwarze-Rodrian



**ZOOM Bridge**  
Gelsenkirchen Grimberg  
Rhine-Herne-Canal

Schlaich, Bergemann &  
Partner im Ruhrgebiet

Regionalverband Ruhr | European and regional networks | Hybrid Parks | NRW | Enscher Landscape Park | Dyck - 15.10.2012 | M. Schwarze-Rodrian



Regionalverband Ruhr | European and regional networks | Hybrid Parks | NRW | Enscher Landscape Park | Dyck - 15.10.2012 | M. Schwarze-Rodrian



Regionalverband Ruhr | European and regional networks | Hybrid Parks | NRW | Enscher Landscape Park | Dyck - 15.10.2012 | M. Schwarze-Rodrian



Gehölzgarten  
Ripshorst

Bridge  
over  
the  
Rhein-  
Herne-  
Canal

Prof. Dr. Jörg Schlaich

Regionalverband Ruhr | European and regional networks | Hybrid Parks | NRW | Enscher Landscape Park | Dyck - 15.10.2012 | M. Schwarze-Rodrian





Regionalverband Ruhr | European and regional networks | Hybrid Parks | NRW | Emscher Landscape Park | Dyck - 15.10.2012 | M. Schwarze-Rodrian



**Erzbahn  
Bochum West**

Connection  
between  
the new  
**Westpark**  
and  
the  
**Erzbahn**

Schlaich, Bergemann  
& Partner

Regionalverband Ruhr | European and regional networks | Hybrid Parks | NRW | Emscher Landscape Park | Dyck - 15.10.2012 | M. Schwarze-Rodrian



Regionalverband Ruhr | European and regional networks | Hybrid Parks | NRW | Emscher Landscape Park | Dyck - 15.10.2012 | M. Schwarze-Rodrian



Regionalverband Ruhr | European and regional networks | Hybrid Parks | NRW | Emscher Landscape Park | Dyck - 15.10.2012 | M. Schwarze-Rodrian



Regionalverband Ruhr | European and regional networks | Hybrid Parks | NRW | Emscher Landscape Park | Dyck - 15.10.2012 | M. Schwarze-Rodrian



**Frintrop-Bridge**  
Prof. Dr.-Ing Stefan Polónyi  
Ripshorster Str. / Essen

Regionalverband Ruhr | European and regional networks | Hybrid Parks | NRW | Emscher Landscape Park | Dyck - 15.10.2012 | M. Schwarze-Rodrian



Regionalverband Ruhr | European and regional networks | Hybrid Parks | NRW | Escher Landscape Park | Dyck - 15.10.2012 | M. Schwarze-Rodrian



Regionalverband Ruhr | European and regional networks | Hybrid Parks | NRW | Escher Landscape Park | Dyck - 15.10.2012 | M. Schwarze-Rodrian



**Dragon Bridge**  
Recklinghausen / Herten  
Prof. Dr. R. Wörzberger

Regionalverband Ruhr | European and regional networks | Hybrid Parks | NRW | Escher Landscape Park | Dyck - 15.10.2012 | M. Schwarze-Rodrian



Regionalverband Ruhr | European and regional networks | Hybrid Parks | NRW | Escher Landscape Park | Dyck - 15.10.2012 | M. Schwarze-Rodrian



Regionalverband Ruhr | European and regional networks | Hybrid Parks | NRW | Escher Landscape Park | Dyck - 15.10.2012 | M. Schwarze-Rodrian



**From Rail to Trail**  
Kray-Wanner-Bahn  
Gelsenkirchen

Regionalverband Ruhr | European and regional networks | Hybrid Parks | NRW | Escher Landscape Park | Dyck - 15.10.2012 | M. Schwarze-Rodrian





Regionalverband Ruhr | European and regional networks | Hybrid Parks | NRW | Emscher Landscape Park | Dyck - 15.10.2012 | M. Schwarze-Rodrian



Regionalverband Ruhr | European and regional networks | Hybrid Parks | NRW | Emscher Landscape Park | Dyck - 15.10.2012 | M. Schwarze-Rodrian



Rheinische Bahn / Erzbahn *Recycling*

Regionalverband Ruhr | European and regional networks | Hybrid Parks | NRW | Emscher Landscape Park | Dyck - 15.10.2012 | M. Schwarze-Rodrian



Pfeilerbahn Erzbahntrasse

Regionalverband Ruhr | European and regional networks | Hybrid Parks | NRW | Emscher Landscape Park | Dyck - 15.10.2012 | M. Schwarze-Rodrian



Regionalverband Ruhr | European and regional networks | Hybrid Parks | NRW | Emscher Landscape Park | Dyck - 15.10.2012 | M. Schwarze-Rodrian



Regionalverband Ruhr | European and regional networks | Hybrid Parks | NRW | Emscher Landscape Park | Dyck - 15.10.2012 | M. Schwarze-Rodrian



**Tausendfüßlerbrücke**  
Oberhausen

Regionalverband Ruhr | European and regional networks | Hybrid Parks | NRW | Emscher Landscape Park | Dyck - 15.10.2012 | M. Schwarze-Rodrian



**Stegbrücke**  
WestPark / Bochum  
Design: Pahl + Weber Pahl

Regionalverband Ruhr | European and regional networks | Hybrid Parks | NRW | Emscher Landscape Park | Dyck - 15.10.2012 | M. Schwarze-Rodrian



**Segerothstrasse**  
Essen  
**Rheinische Bahn**

Regionalverband Ruhr | European and regional networks | Hybrid Parks | NRW | Emscher Landscape Park | Dyck - 15.10.2012 | M. Schwarze-Rodrian



**Segerothstrasse**  
Essen  
**Rheinische Bahn**

Regionalverband Ruhr | European and regional networks | Hybrid Parks | NRW | Emscher Landscape Park | Dyck - 15.10.2012 | M. Schwarze-Rodrian



**Bauwerksentwurf / Objektplanung**  
Martin & Ulrike Halfmann / Köln

**Tragwerksplanung**  
Ifb frohloff staffa kühl ecker / Berlin

Regionalverband Ruhr | European and regional networks | Hybrid Parks | NRW | Emscher Landscape Park | Dyck - 15.10.2012 | M. Schwarze-Rodrian



Regionalverband Ruhr | European and regional networks | Hybrid Parks | NRW | Emscher Landscape Park | Dyck - 15.10.2012 | M. Schwarze-Rodrian





Rheinische Bahn  
Essen / Recycling

Regionalverband Ruhr | European and regional networks | Hybrid Parks | NRW | Emscher Landscape Park | Dyck - 15.10.2012 | M. Schwarze-Rodrian



Rheinische Bahn  
Essen / Recycling

Regionalverband Ruhr | European and regional networks | Hybrid Parks | NRW | Emscher Landscape Park | Dyck - 15.10.2012 | M. Schwarze-Rodrian



Rheinische Bahn  
Essen

Regionalverband Ruhr | European and regional networks | Hybrid Parks | NRW | Emscher Landscape Park | Dyck - 15.10.2012 | M. Schwarze-Rodrian



Rheinische Bahn  
Essen

Regionalverband Ruhr | European and regional networks | Hybrid Parks | NRW | Emscher Landscape Park | Dyck - 15.10.2012 | M. Schwarze-Rodrian



Rheinische Bahn  
Essen / Recycling

Regionalverband Ruhr | European and regional networks | Hybrid Parks | NRW | Emscher Landscape Park | Dyck - 15.10.2012 | M. Schwarze-Rodrian



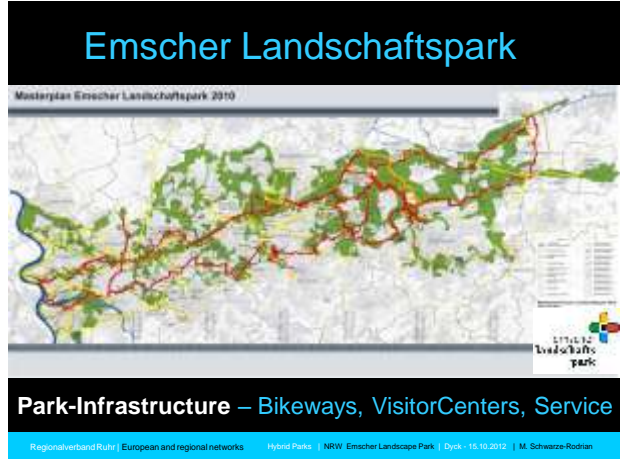
Rheinische Bahn  
Essen

Regionalverband Ruhr | European and regional networks | Hybrid Parks | NRW | Emscher Landscape Park | Dyck - 15.10.2012 | M. Schwarze-Rodrian



**Rheinische Bahn**  
Essen / Recycling

Regionalverband Ruhr | European and regional networks | Hybrid Parks | NRW | Emscher Landscape Park | Dyck - 15.10.2012 | M. Schwarze-Rodrian



**Emscher Landschaftspark**

Masterplan Emscher Landschaftspark 2010

**Park-Infrastructure – Bikeways, VisitorCenters, Service**

Regionalverband Ruhr | European and regional networks | Hybrid Parks | NRW | Emscher Landscape Park | Dyck - 15.10.2012 | M. Schwarze-Rodrian



**12**

**Interaction**  
**Art & Emscher River**

Regionalverband Ruhr | European and regional networks | Hybrid Parks | NRW | Emscher Landscape Park | Dyck - 15.10.2012 | M. Schwarze-Rodrian



**2010**

**EMSCHER KUNST.2010**

**The Island**  
European Capital of Culture **RUHR.2010**

Regionalverband Ruhr | European and regional networks | Hybrid Parks | NRW | Emscher Landscape Park | Dyck - 15.10.2012 | M. Schwarze-Rodrian



EMSCHERKUNST.2010 iPhone Applikation ist ab sofort kostenlos im offiziellen Apple iTunes Store verfügbar

Die offizielle App zur EMSCHERKUNST.2010, der größten Kunstausstellung der RUHR 2010. Sie zeigt 20 Humberheer von 40 Künstlern weltweit und erzählt vom EMSCHERKUNST.2010. Sie ist ein Kooperationsprojekt der Kulturstiftung Europa Ruhr 2010, der Emscherregion und des Regionalverbands Ruhr.



Regionalverband Ruhr | European and regional networks | Hybrid Parks | NRW | Emscher Landscape Park | Dyck - 15.10.2012 | M. Schwarze-Rodrian



**Marjetica Potrč / Eva Pfannes / Sylvain Hartenberg**  
*Between the waters: The Emscher Community Gardens*

**Between the waters:**  
The Emscher Community Gardens

Regionalverband Ruhr | European and regional networks | Hybrid Parks | NRW | Emscher Landscape Park | Dyck - 15.10.2012 | M. Schwarze-Rodrian







Regionalverband Ruhr | European and regional networks | Hybrid Parks | NRW | Emscher Landscape Park | Dyck - 15.10.2012 | M. Schwarze-Rodrian



Regionalverband Ruhr | European and regional networks | Hybrid Parks | NRW | Emscher Landscape Park | Dyck - 15.10.2012 | M. Schwarze-Rodrian



Warten auf den Fluß  
Waiting for the River

Regionalverband Ruhr | European and regional networks | Hybrid Parks | NRW | Emscher Landscape Park | Dyck - 15.10.2012 | M. Schwarze-Rodrian



Regionalverband Ruhr | European and regional networks | Hybrid Parks | NRW | Emscher Landscape Park | Dyck - 15.10.2012 | M. Schwarze-Rodrian



Regionalverband Ruhr | European and regional networks | Hybrid Parks | NRW | Emscher Landscape Park | Dyck - 15.10.2012 | M. Schwarze-Rodrian



Regionalverband Ruhr | European and regional networks | Hybrid Parks | NRW | Emscher Landscape Park | Dyck - 15.10.2012 | M. Schwarze-Rodrian





Regionalverband Ruhr | European and regional networks | Hybrid Parks | NRW | Emscher Landscape Park | Dyck - 15.10.2012 | M. Schwarze-Rodrian



Regionalverband Ruhr | European and regional networks | Hybrid Parks | NRW | Emscher Landscape Park | Dyck - 15.10.2012 | M. Schwarze-Rodrian



Regionalverband Ruhr | European and regional networks | Hybrid Parks | NRW | Emscher Landscape Park | Dyck - 15.10.2012 | M. Schwarze-Rodrian



Regionalverband Ruhr | European and regional networks | Hybrid Parks | NRW | Emscher Landscape Park | Dyck - 15.10.2012 | M. Schwarze-Rodrian



Regionalverband Ruhr | European and regional networks | Hybrid Parks | NRW | Emscher Landscape Park | Dyck - 15.10.2012 | M. Schwarze-Rodrian



Regionalverband Ruhr | European and regional networks | Hybrid Parks | NRW | Emscher Landscape Park | Dyck - 15.10.2012 | M. Schwarze-Rodrian



Regionalverband Ruhr | European and regional networks | Hybrid Parks | NRW Emscher Landscape Park | Dyck - 15.10.2012 | M. Schwarze-Rodrian



Regionalverband Ruhr | European and regional networks | Hybrid Parks | NRW Emscher Landscape Park | Dyck - 15.10.2012 | M. Schwarze-Rodrian



*Thank you for your attention*

Regionalverband Ruhr | European and regional networks | Hybrid Parks | NRW Emscher Landscape Park | Dyck - 15.10.2012 | M. Schwarze-Rodrian




---

**Contact:**

Michael Schwarze-Rodrian

Regional Association Ruhr (RVR)  
Referat 5 – European and Regional Networks  
Kronprinzenstrasse 35  
45128 Essen

Tel. +49 (0) 201 – 2069 – 6387  
mobil: +49 (0) 151 – 46 71 14 93  
mail: [schwarze-rodrian@rvr-online.de](mailto:schwarze-rodrian@rvr-online.de)

[www.metropoleruhr.de](http://www.metropoleruhr.de)

Regionalverband Ruhr | European and regional networks | Hybrid Parks | NRW Emscher Landscape Park | Dyck - 15.10.2012 | M. Schwarze-Rodrian

**Download:** [www.metropoleruhr.de](http://www.metropoleruhr.de)  
[www.konzept-ruhr.de](http://www.konzept-ruhr.de)  
[www.route-industriekultur.de](http://www.route-industriekultur.de)  
[www.elp2010.de](http://www.elp2010.de)

Regionalverband Ruhr | European and regional networks | Hybrid Parks | NRW Emscher Landscape Park | Dyck - 15.10.2012 | M. Schwarze-Rodrian

**Masterplan Emscher Landschaftspark 2010**  
**Klartext Verlag** in Essen  
**ISBN 3 – 89861 – 476 – X**

Regionalverband Ruhr | European and regional networks | Hybrid Parks | NRW Emscher Landscape Park | Dyck - 15.10.2012 | M. Schwarze-Rodrian





## Contact:

Michael Schwarze-Rodrian

Regionalverband Ruhr (RVR)  
Referat 5 – European and Regional Networks  
Kronprinzenstrasse 35  
45128 Essen

Tel. +49 (0) 201 – 2069 – 6387  
mobil: +49 (0) 151 – 46 71 14 93  
mail: [schwarze-rodrian@rvr-online.de](mailto:schwarze-rodrian@rvr-online.de)

[www.metropoluhr.de](http://www.metropoluhr.de)